

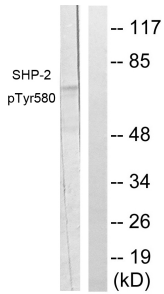
## Anti-SHP-2 (phospho Tyr580) Antibody (A94170)

### Specifications:

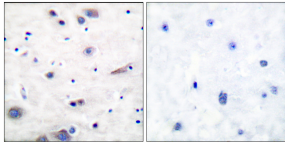
Name:	Anti-SHP-2 (phospho Tyr580) Antibody
Description:	Rabbit polyclonal antibody to SHP-2 (phospho Tyr580).
Specificity:	This antibody detects endogenous levels of SHP-2 only when phosphorylated at Tyr580.
Applications:	WB, IHC, ELISA
Recommended Dilutions:	WB: 1:500-1:1000, IHC: 1:50-1:100, ELISA: 1:1000
Reactivity:	Human, Mouse, Rat
Immunogen:	Synthetic peptide derived from human SHP-2 around the phosphorylation site of Tyr580 (amino acids 546-595).
Host:	Rabbit
Clonality:	Polyclonal
Isotype:	IgG
Conjugate:	Unconjugated
Purification:	Purified from rabbit serum by antigen affinity chromatography using the immunizing phospho peptide.
Molecular Weight:	68kDa
Product Form:	Liquid
Formulation:	Supplied in Phosphate Buffered Saline (without Mg <sup>2+</sup> and Ca <sup>2+</sup> ), pH 7.4, with 150mM NaCl, 0.02% Sodium Azide, and 50% Glycerol.
Storage:	Shipped at 4°C. Upon delivery aliquot and store at -20°C. Avoid freeze / thaw cycles.
Disclaimer:	This product is for research use only. It is not intended for diagnostic or therapeutic use.

## Anti-SHP-2 (phospho Tyr580) Antibody (A94170)

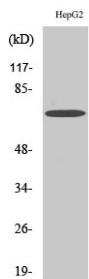
### Images:



Western blot analysis of lysates from A431 cells using Anti-SHP-2 (phospho Tyr580) Antibody. The right hand lane represents a negative control, where the antibody is blocked by the immunising peptide.



Immunohistochemical analysis of paraffin-embedded human brain using Anti-SHP-2 (phospho Tyr580) Antibody. The right hand panel represents a negative control, where the antibody was pre-incubated with the immunising peptide.



Western blot analysis of various cells using Anti-SHP-2 (phospho Tyr580) Antibody.