

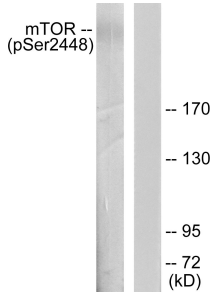
Anti-mTOR (phospho Ser2448) Antibody (A94183)

Specifications:

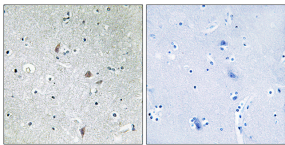
Name:	Anti-mTOR (phospho Ser2448) Antibody
Description:	Rabbit polyclonal antibody to mTOR (phospho Ser2448).
Specificity:	This antibody detects endogenous levels of mTOR only when phosphorylated at Ser2448.
Applications:	WB, IHC, ELISA
Recommended Dilutions:	IHC: 1:50-1:100, IF: 1:100-1:500, ELISA: 1:20000
Reactivity:	Human, Mouse, Rat
Immunogen:	Synthetic peptide derived from human mTOR around the phosphorylation site of Ser2448 (amino acids 2415-2464).
Host:	Rabbit
Clonality:	Polyclonal
Isotype:	IgG
Conjugate:	Unconjugated
Purification:	Purified from rabbit serum by antigen affinity chromatography using the immunizing phospho peptide.
Molecular Weight:	288kDa
Product Form:	Liquid
Formulation:	Supplied in Phosphate Buffered Saline (without Mg ²⁺ and Ca ²⁺), pH 7.4, with 150mM NaCl, 0.02% Sodium Azide, and 50% Glycerol.
Storage:	Shipped at 4°C. Upon delivery aliquot and store at -20°C. Avoid freeze / thaw cycles.
Disclaimer:	This product is for research use only. It is not intended for diagnostic or therapeutic use.

Anti-mTOR (phospho Ser2448) Antibody (A94183)

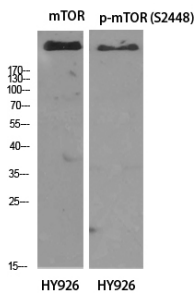
Images:



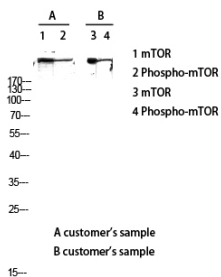
Western blot analysis of lysates from HeLa cells treated with EGF 200ng/ml 30' using Anti-mTOR (phospho Ser2448) Antibody. The right hand lane represents a negative control, where the antibody is blocked by the immunising peptide.



Immunohistochemical analysis of paraffin-embedded human brain using Anti-mTOR (phospho Ser2448) Antibody. The right hand panel represents a negative control, where the antibody was pre-incubated with the immunising peptide.



Western blot analysis of various cells using Anti-mTOR (phospho Ser2448) Antibody.



Western blot analysis of customer's lysis using Anti-mTOR (phospho Ser2448) Antibody.