

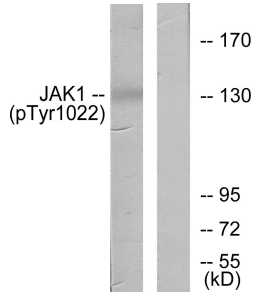
## Anti-JAK1 (phospho Tyr1022) Antibody (A94191)

### Specifications:

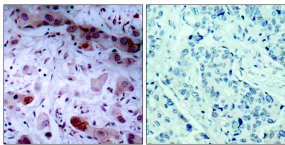
Name:	Anti-JAK1 (phospho Tyr1022) Antibody
Description:	Rabbit polyclonal antibody to JAK1 (phospho Tyr1022).
Specificity:	This antibody detects endogenous levels of JAK1 only when phosphorylated at Tyr1022.
Applications:	WB, IHC, ELISA
Recommended Dilutions:	IHC: 1:50-1:100, ELISA: 1:20000
Reactivity:	Human, Mouse, Rat
Immunogen:	Synthetic peptide derived from human JAK1 around the phosphorylation site of Tyr1022 (amino acids 988-1037).
Host:	Rabbit
Clonality:	Polyclonal
Isotype:	IgG
Conjugate:	Unconjugated
Purification:	Purified from rabbit serum by antigen affinity chromatography using the immunizing phospho peptide.
Molecular Weight:	131kDa
Product Form:	Liquid
Formulation:	Supplied in Phosphate Buffered Saline (without Mg <sup>2+</sup> and Ca <sup>2+</sup> ), pH 7.4, with 150mM NaCl, 0.02% Sodium Azide, and 50% Glycerol.
Storage:	Shipped at 4°C. Upon delivery aliquot and store at -20°C. Avoid freeze / thaw cycles.
Disclaimer:	This product is for research use only. It is not intended for diagnostic or therapeutic use.

## Anti-JAK1 (phospho Tyr1022) Antibody (A94191)

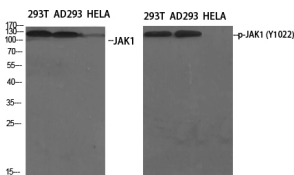
### Images:



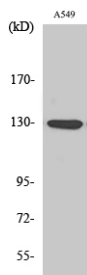
Western blot analysis of lysates from A549 cells using Anti-JAK1 (phospho Tyr1022) Antibody. The right hand lane represents a negative control, where the antibody is blocked by the immunising peptide.



Immunohistochemical analysis of paraffin-embedded human breast carcinoma using Anti-JAK1 (phospho Tyr1022) Antibody. The right hand panel represents a negative control, where the antibody was pre-incubated with the immunising peptide.



Western blot analysis of various cells using Anti-JAK1 (phospho Tyr1022) Antibody.



Western blot analysis of A549 cells using Anti-JAK1 (phospho Tyr1022) Antibody.