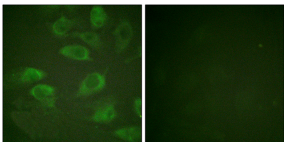


## Anti-IL-2R alpha (phospho Ser268) Antibody (A94229)

### Specifications:

Name:	Anti-IL-2R alpha (phospho Ser268) Antibody
Description:	Rabbit polyclonal antibody to IL-2R alpha (phospho Ser268).
Specificity:	This antibody detects endogenous levels of IL-2R alpha/CD25 only when phosphorylated at Ser268.
Applications:	WB, IF, ELISA
Recommended Dilutions:	WB: 1:500-1:1000, ELISA: 1:40000
Reactivity:	Human
Immunogen:	Synthetic peptide derived from human IL-2R alpha/CD25 around the phosphorylation site of Ser268 (amino acids 223-272).
Host:	Rabbit
Clonality:	Polyclonal
Isotype:	IgG
Conjugate:	Unconjugated
Purification:	Purified from rabbit serum by antigen affinity chromatography using the immunizing peptide.
Molecular Weight:	30kDa
Product Form:	Liquid
Formulation:	Supplied in Phosphate Buffered Saline (without Mg <sup>2+</sup> and Ca <sup>2+</sup> ), pH 7.4, with 150mM NaCl, 0.02% Sodium Azide, and 50% Glycerol.
Storage:	Shipped at 4°C. Upon delivery aliquot and store at -20°C. Avoid freeze / thaw cycles.
Disclaimer:	This product is for research use only. It is not intended for diagnostic or therapeutic use.

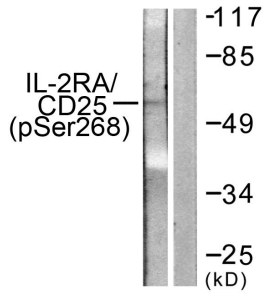
### Images:



Immunofluorescence analysis of HeLa cells using Anti-IL-2R alpha (phospho Ser268) Antibody. The right hand panel represents a negative control, where the antibody was pre-incubated with the immunising peptide.

## Anti-IL-2R alpha (phospho Ser268) Antibody (A94229)

Images continued:



Western blot analysis of lysates from LOVO cells using Anti-IL-2R alpha (phospho Ser268) Antibody. The right hand lane represents a negative control, where the antibody is blocked by the immunising peptide.