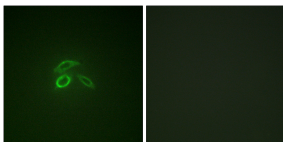


Anti-CD227 (phospho Tyr1229) Antibody (A94238)

Specifications:

Name:	Anti-CD227 (phospho Tyr1229) Antibody
Description:	Rabbit polyclonal antibody to CD227 (phospho Tyr1229).
Specificity:	This antibody detects endogenous levels of CD227/MUC1 only when phosphorylated at Tyr1229.
Applications:	WB, IHC, IF, ELISA
Recommended Dilutions:	WB: 1:500-1:1000, ELISA: 1:5000
Reactivity:	Human
Immunogen:	Synthetic peptide derived from human CD227/MUC1 around the phosphorylation site of Tyr1229 (amino acids 1201-1250).
Host:	Rabbit
Clonality:	Polyclonal
Isotype:	IgG
Conjugate:	Unconjugated
Purification:	Purified from rabbit serum by antigen affinity chromatography using the immunizing phospho peptide.
Molecular Weight:	122kDa
Product Form:	Liquid
Formulation:	Supplied in Phosphate Buffered Saline (without Mg ²⁺ and Ca ²⁺), pH 7.4, with 150mM NaCl, 0.02% Sodium Azide, and 50% Glycerol.
Storage:	Shipped at 4°C. Upon delivery aliquot and store at -20°C. Avoid freeze / thaw cycles.
Disclaimer:	This product is for research use only. It is not intended for diagnostic or therapeutic use.

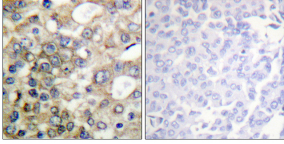
Images:



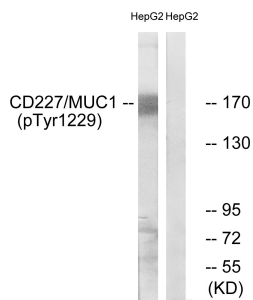
Immunofluorescence analysis of HepG2 cells using Anti-CD227 (phospho Tyr1229) Antibody. The right hand panel represents a negative control, where the antibody was pre-incubated with the immunising peptide.

Anti-CD227 (phospho Tyr1229) Antibody (A94238)

Images continued:



Immunohistochemical analysis of paraffin-embedded human breast carcinoma using Anti-CD227 (phospho Tyr1229) Antibody. The right hand panel represents a negative control, where the antibody was pre-incubated with the immunising peptide.



Western blot analysis of lysates from HepG2 cells treated with PMA 125ng/ml 30' using Anti-CD227 (phospho Tyr1229) Antibody. The right hand lane represents a negative control, where the antibody is blocked by the immunising peptide.