

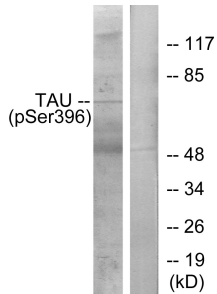
Anti-Tau (phospho Ser396) Antibody (A94256)

Specifications:

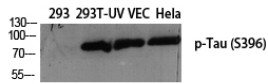
Name:	Anti-Tau (phospho Ser396) Antibody
Description:	Rabbit polyclonal antibody to Tau (phospho Ser396).
Specificity:	This antibody detects endogenous levels of Tau only when phosphorylated at Ser396.
Applications:	WB, ELISA
Recommended Dilutions:	WB: 1:500-1:1000, ELISA: 1:20000
Reactivity:	Human, Mouse, Rat
Immunogen:	Synthetic peptide derived from human Tau around the phosphorylation site of Ser396 (amino acids 681-730).
Host:	Rabbit
Clonality:	Polyclonal
Isotype:	IgG
Conjugate:	Unconjugated
Purification:	Purified from rabbit serum by antigen affinity chromatography using the immunizing phospho peptide.
Molecular Weight:	78kDa
Product Form:	Liquid
Formulation:	Supplied in Phosphate Buffered Saline (without Mg ²⁺ and Ca ²⁺), pH 7.4, with 150mM NaCl, 0.02% Sodium Azide, and 50% Glycerol.
Storage:	Shipped at 4°C. Upon delivery aliquot and store at -20°C. Avoid freeze / thaw cycles.
Disclaimer:	This product is for research use only. It is not intended for diagnostic or therapeutic use.

Anti-Tau (phospho Ser396) Antibody (A94256)

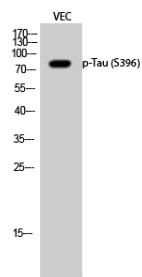
Images:



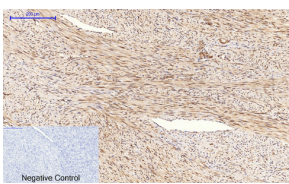
Western blot analysis of lysates from HeLa cells using Anti-Tau (phospho Ser396) Antibody. The right hand lane represents a negative control, where the antibody is blocked by the immunising peptide.



Western blot analysis of various cells using Anti-Tau (phospho Ser396) Antibody.



Western blot analysis of VEC cells using Anti-Tau (phospho Ser396) Antibody.



Immunohistochemical analysis of paraffin-embedded human uterus cancer tissue using Anti-Tau (phospho Ser396) Antibody at 1:200 (4°C overnight). Negative control was secondary antibody only.