

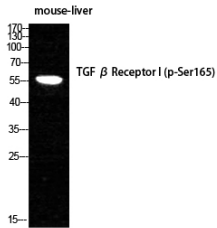
## Anti-TGF beta Receptor I (phospho Ser165) Antibody (A94342)

### Specifications:

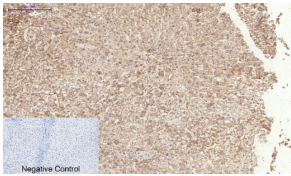
Name:	Anti-TGF beta Receptor I (phospho Ser165) Antibody
Description:	Rabbit polyclonal antibody to TGF beta Receptor I (phospho Ser165).
Specificity:	This antibody detects endogenous levels of TGF beta Receptor I only when phosphorylated at Ser165.
Applications:	IF, ELISA
Recommended Dilutions:	WB: 1:500-1:1000, IHC: 1:50-1:100, ELISA: 1:5000
Reactivity:	Human, Mouse, Rat
Immunogen:	Synthetic peptide derived from human TGF beta Receptor I around the phosphorylation site of Ser165 (amino acids 131-180).
Host:	Rabbit
Clonality:	Polyclonal
Isotype:	IgG
Conjugate:	Unconjugated
Purification:	Purified from rabbit serum by antigen affinity chromatography using the immunizing phospho peptide.
Molecular Weight:	55kDa
Product Form:	Liquid
Formulation:	Supplied in Phosphate Buffered Saline (without Mg <sup>2+</sup> and Ca <sup>2+</sup> ), pH 7.4, with 150mM NaCl, 0.02% Sodium Azide, and 50% Glycerol.
Storage:	Shipped at 4°C. Upon delivery aliquot and store at -20°C. Avoid freeze / thaw cycles.
Disclaimer:	This product is for research use only. It is not intended for diagnostic or therapeutic use.

## Anti-TGF beta Receptor I (phospho Ser165) Antibody (A94342)

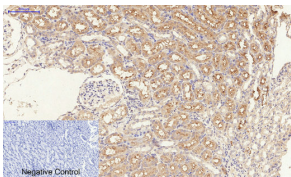
### Images:



Western blot analysis of mouse LIVER cells using Anti-TGF beta Receptor I (phospho Ser165) Antibody.



Immunohistochemical analysis of paraffin-embedded human liver tissue using Anti-TGF beta Receptor I (phospho Ser165) Antibody at 1:200 (4°C overnight). Negative control was secondary antibody only.



Immunohistochemical analysis of paraffin-embedded rat kidney tissue using Anti-TGF beta Receptor I (phospho Ser165) Antibody at 1:200 (4°C overnight). Negative control was secondary antibody only.