

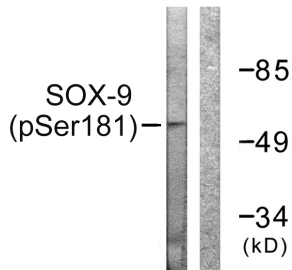
## Anti-SOX-9 (phospho Ser181) Antibody (A94385)

### Specifications:

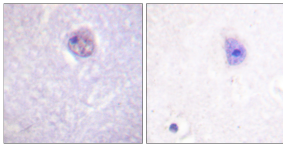
Name:	Anti-SOX-9 (phospho Ser181) Antibody
Description:	Rabbit polyclonal antibody to SOX-9 (phospho Ser181).
Specificity:	This antibody detects endogenous levels of SOX-9 only when phosphorylated at Ser181.
Applications:	WB, IHC, IF, ELISA
Recommended Dilutions:	IHC: 1:50-1:100, ELISA: 1:5000
Reactivity:	Human, Mouse
Immunogen:	Synthetic peptide derived from human SOX-9 around the phosphorylation site of Ser181 (amino acids 147-196).
Host:	Rabbit
Clonality:	Polyclonal
Isotype:	IgG
Conjugate:	Unconjugated
Purification:	Purified from rabbit serum by antigen affinity chromatography using the immunizing phospho peptide.
Molecular Weight:	56kDa
Product Form:	Liquid
Formulation:	Supplied in Phosphate Buffered Saline (without Mg <sup>2+</sup> and Ca <sup>2+</sup> ), pH 7.4, with 150mM NaCl, 0.02% Sodium Azide, and 50% Glycerol.
Storage:	Shipped at 4°C. Upon delivery aliquot and store at -20°C. Avoid freeze / thaw cycles.
Disclaimer:	This product is for research use only. It is not intended for diagnostic or therapeutic use.

## Anti-SOX-9 (phospho Ser181) Antibody (A94385)

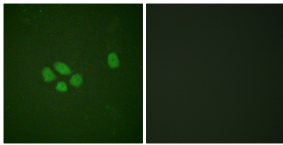
### Images:



Western blot analysis of lysates from 293 cells treated with PBS 60' using Anti-SOX-9 (phospho Ser181) Antibody. The right hand lane represents a negative control, where the antibody is blocked by the immunising peptide.



Immunohistochemical analysis of paraffin-embedded human brain using Anti-SOX-9 (phospho Ser181) Antibody. The right hand panel represents a negative control, where the antibody was pre-incubated with the immunising peptide.



Immunofluorescence analysis of A549 cells using Anti-SOX-9 (phospho Ser181) Antibody. The right hand panel represents a negative control, where the antibody was pre-incubated with the immunising peptide.