

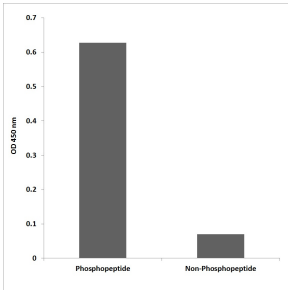
Anti-Tuberin (phospho Ser1254) Antibody (A94480)

Specifications:

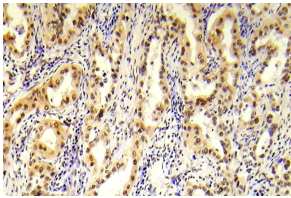
Name:	Anti-Tuberin (phospho Ser1254) Antibody
Description:	Rabbit polyclonal antibody to Tuberin (phospho Ser1254).
Specificity:	This antibody detects endogenous levels of Tuberin only when phosphorylated at Ser1254.
Applications:	IHC, ELISA
Recommended Dilutions:	IHC: 1:50-1:100, IF: 1:100-1:500, ELISA: 1:20000
Reactivity:	Human, Rat
Immunogen:	Synthetic phospho-peptide derived from human Tuberin around the phosphorylation site of Ser1254.
Host:	Rabbit
Clonality:	Polyclonal
Isotype:	IgG
Conjugate:	Unconjugated
Purification:	Purified from rabbit serum by antigen affinity chromatography using the immunizing phospho peptide.
Molecular Weight:	200kDa
Product Form:	Liquid
Formulation:	Supplied in Phosphate Buffered Saline (without Mg ²⁺ and Ca ²⁺), pH 7.4, with 150mM NaCl, 0.02% Sodium Azide, and 50% Glycerol.
Storage:	Shipped at 4°C. Upon delivery aliquot and store at -20°C. Avoid freeze / thaw cycles.
Disclaimer:	This product is for research use only. It is not intended for diagnostic or therapeutic use.

Anti-Tuberin (phospho Ser1254) Antibody (A94480)

Images:



ELISA for immunogen phosphopeptide (left) and non-phosphopeptide (right) using Anti-Tuberin (phospho Ser1254) Antibody.



Immunohistochemical analysis of paraffin-embedded human prostate carcinoma tissue using Anti-Tuberin (phospho Ser1254) Antibody.