

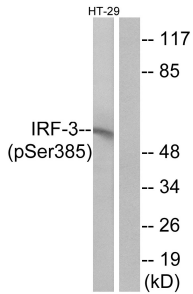
## Anti-IRF-3 (phospho Ser385) Antibody (A94488)

### Specifications:

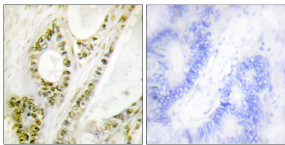
Name:	Anti-IRF-3 (phospho Ser385) Antibody
Description:	Rabbit polyclonal antibody to IRF-3 (phospho Ser385).
Specificity:	This antibody detects endogenous levels of IRF-3 only when phosphorylated at Ser385.
Applications:	WB, IHC, IF, ELISA
Recommended Dilutions:	WB: 1:500-1:1000, ELISA: 1:10000
Reactivity:	Human
Immunogen:	Synthetic peptide derived from human IRF-3 around the phosphorylation site of Ser385 (amino acids 351-400).
Host:	Rabbit
Clonality:	Polyclonal
Isotype:	IgG
Conjugate:	Unconjugated
Purification:	Purified from rabbit serum by antigen affinity chromatography using the immunizing phospho peptide.
Molecular Weight:	47kDa
Product Form:	Liquid
Formulation:	Supplied in Phosphate Buffered Saline (without Mg <sup>2+</sup> and Ca <sup>2+</sup> ), pH 7.4, with 150mM NaCl, 0.02% Sodium Azide, and 50% Glycerol.
Storage:	Shipped at 4°C. Upon delivery aliquot and store at -20°C. Avoid freeze / thaw cycles.
Disclaimer:	This product is for research use only. It is not intended for diagnostic or therapeutic use.

## Anti-IRF-3 (phospho Ser385) Antibody (A94488)

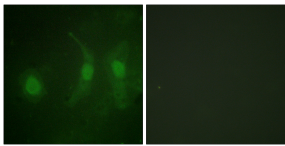
### Images:



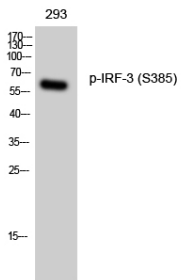
Western blot analysis of lysates from HT29 cells treated with INSULIN 0.01U/ML 15' using Anti-IRF-3 (phospho Ser385) Antibody. The right hand lane represents a negative control, where the antibody is blocked by the immunising peptide.



Immunohistochemical analysis of paraffin-embedded human colon carcinoma using Anti-IRF-3 (phospho Ser385) Antibody. The right hand panel represents a negative control, where the antibody was pre-incubated with the immunising peptide.



Immunofluorescence analysis of HeLa cells using Anti-IRF-3 (phospho Ser385) Antibody. The right hand panel represents a negative control, where the antibody was pre-incubated with the immunising peptide.



Western blot analysis of 293 cells using Anti-IRF-3 (phospho Ser385) Antibody.