

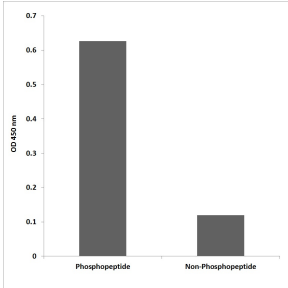
## Anti-LCK (phospho Ser59) Antibody (A94503)

### Specifications:

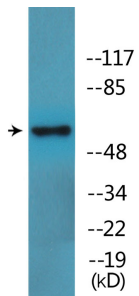
Name:	Anti-LCK (phospho Ser59) Antibody
Description:	Rabbit polyclonal antibody to LCK (phospho Ser59).
Specificity:	This antibody detects endogenous levels of LCK only when phosphorylated at Ser59.
Applications:	WB, ELISA
Recommended Dilutions:	WB: 1:500-1:1000, ELISA: 1:10000
Reactivity:	Human, Mouse, Rat
Immunogen:	Synthetic phospho-peptide derived from human LCK around the phosphorylation site of Ser59.
Host:	Rabbit
Clonality:	Polyclonal
Isotype:	IgG
Conjugate:	Unconjugated
Purification:	Purified from rabbit serum by antigen affinity chromatography using the immunizing phospho peptide.
Molecular Weight:	58kDa
Product Form:	Liquid
Formulation:	Supplied in Phosphate Buffered Saline (without Mg <sup>2+</sup> and Ca <sup>2+</sup> ), pH 7.4, with 150mM NaCl, 0.02% Sodium Azide, and 50% Glycerol.
Storage:	Shipped at 4°C. Upon delivery aliquot and store at -20°C. Avoid freeze / thaw cycles.
Disclaimer:	This product is for research use only. It is not intended for diagnostic or therapeutic use.

## Anti-LCK (phospho Ser59) Antibody (A94503)

### Images:



ELISA for immunogen phosphopeptide (left) and non-phosphopeptide (right) using Anti-LCK (phospho Ser59) Antibody.



Western blot analysis of lysates from Jurkat cells treated with IFN 2500U/ML 30' using Anti-LCK (phospho Ser59) Antibody.