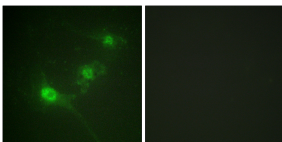


Anti-LKB1 (phospho Ser428) Antibody (A94621)

Specifications:

Name:	Anti-LKB1 (phospho Ser428) Antibody
Description:	Rabbit polyclonal antibody to LKB1 (phospho Ser428).
Specificity:	This antibody detects endogenous levels of LKB1 only when phosphorylated at Ser428.
Applications:	WB, IHC, IF, ELISA
Recommended Dilutions:	WB: 1:500-1:1000, IHC: 1:50-1:100, IF: 1:100-1:500, ELISA: 1:40000
Reactivity:	Human, Mouse
Immunogen:	Synthetic peptide derived from human LKB1 around the phosphorylation site of Ser428 (amino acids 384-433).
Host:	Rabbit
Clonality:	Polyclonal
Isotype:	IgG
Conjugate:	Unconjugated
Purification:	Purified from rabbit serum by antigen affinity chromatography using the immunizing phospho peptide.
Molecular Weight:	48kDa
Product Form:	Liquid
Formulation:	Supplied in Phosphate Buffered Saline (without Mg ²⁺ and Ca ²⁺), pH 7.4, with 150mM NaCl, 0.02% Sodium Azide, and 50% Glycerol.
Storage:	Shipped at 4°C. Upon delivery aliquot and store at -20°C. Avoid freeze / thaw cycles.
Disclaimer:	This product is for research use only. It is not intended for diagnostic or therapeutic use.

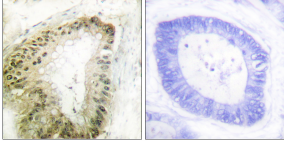
Images:



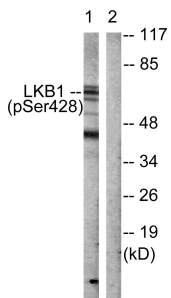
Immunofluorescence analysis of NIH/3T3 cells using Anti-LKB1 (phospho Ser428) Antibody. The right hand panel represents a negative control, where the antibody was pre-incubated with the immunising peptide.

Anti-LKB1 (phospho Ser428) Antibody (A94621)

Images continued:



Immunohistochemical analysis of paraffin-embedded human colon carcinoma using Anti-LKB1 (phospho Ser428) Antibody. The right hand panel represents a negative control, where the antibody was pre-incubated with the immunising peptide.



Western blot analysis of lysates from HeLa cells treated with PMA 125ng/ml 30' using Anti-LKB1 (phospho Ser428) Antibody. The right hand lane represents a negative control, where the antibody is blocked by the immunising peptide.