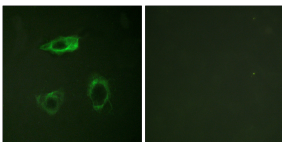


Anti-CD18 (phospho Thr758) Antibody (A94628)

Specifications:

Name:	Anti-CD18 (phospho Thr758) Antibody
Description:	Rabbit polyclonal antibody to CD18 (phospho Thr758).
Specificity:	This antibody detects endogenous levels of CD18/ITGB2 only when phosphorylated at Thr758.
Applications:	WB, IF, ELISA
Recommended Dilutions:	WB: 1:500-1:1000, IF: 1:100-1:500, ELISA: 1:40000
Reactivity:	Human, Mouse, Rat
Immunogen:	Synthetic peptide derived from human CD18/ITGB2 around the phosphorylation site of Thr758 (amino acids 720-769).
Host:	Rabbit
Clonality:	Polyclonal
Isotype:	IgG
Conjugate:	Unconjugated
Purification:	Purified from rabbit serum by antigen affinity chromatography using the immunizing phospho peptide.
Molecular Weight:	84kDa
Product Form:	Liquid
Formulation:	Supplied in Phosphate Buffered Saline (without Mg ²⁺ and Ca ²⁺), pH 7.4, with 150mM NaCl, 0.02% Sodium Azide, and 50% Glycerol.
Storage:	Shipped at 4°C. Upon delivery aliquot and store at -20°C. Avoid freeze / thaw cycles.
Disclaimer:	This product is for research use only. It is not intended for diagnostic or therapeutic use.

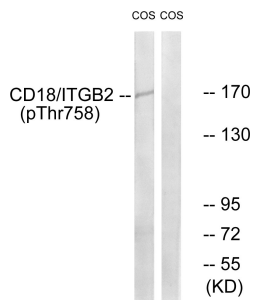
Images:



Immunofluorescence analysis of HepG2 cells using Anti-CD18 (phospho Thr758) Antibody. The right hand panel represents a negative control, where the antibody was pre-incubated with the immunising peptide.

Anti-CD18 (phospho Thr758) Antibody (A94628)

Images continued:



Western blot analysis of lysates from COS7 cells treated with EGF 200ng/ml 30' using Anti-CD18 (phospho Thr758) Antibody. The right hand lane represents a negative control, where the antibody is blocked by the immunising peptide.