

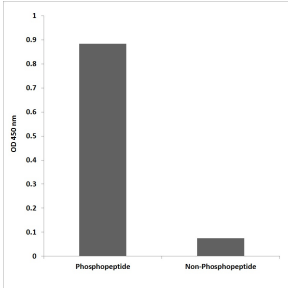
## Anti-HSP27 (phospho Ser78 + Ser82) Antibody (A94692)

### Specifications:

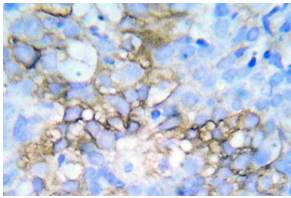
Name:	Anti-HSP27 (phospho Ser78 + Ser82) Antibody
Description:	Rabbit polyclonal antibody to HSP27 (phospho Ser78 + Ser82).
Specificity:	This antibody detects endogenous levels of HSP27 only when phosphorylated at Ser78/Ser82.
Applications:	IHC, ELISA
Recommended Dilutions:	WB: 1:500-1:1000, ELISA: 1:10000
Reactivity:	Human
Immunogen:	Synthetic phospho-peptide derived from human HSP27 around the phosphorylation site of Ser78/Ser82.
Host:	Rabbit
Clonality:	Polyclonal
Isotype:	IgG
Conjugate:	Unconjugated
Purification:	Purified from rabbit serum by antigen affinity chromatography using the immunizing phospho peptide.
Molecular Weight:	22kDa
Product Form:	Liquid
Formulation:	Supplied in Phosphate Buffered Saline (without Mg <sup>2+</sup> and Ca <sup>2+</sup> ), pH 7.4, with 150mM NaCl, 0.02% Sodium Azide, and 50% Glycerol.
Storage:	Shipped at 4°C. Upon delivery aliquot and store at -20°C. Avoid freeze / thaw cycles.
Disclaimer:	This product is for research use only. It is not intended for diagnostic or therapeutic use.

## Anti-HSP27 (phospho Ser78 + Ser82) Antibody (A94692)

### Images:



ELISA for immunogen phosphopeptide (left) and non-phosphopeptide (right) using Anti-HSP27 (phospho Ser78 + Ser82) Antibody.



Immunohistochemical analysis of paraffin-embedded human breast carcinoma tissue using Anti-HSP27 (phospho Ser78 + Ser82) Antibody.