

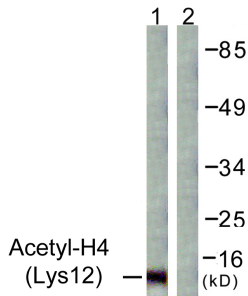
Anti-Histone H4 (acetyl Lys12) Antibody (A94792)

Specifications:

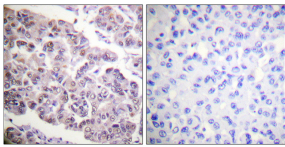
Name:	Anti-Histone H4 (acetyl Lys12) Antibody
Description:	Rabbit polyclonal antibody to Histone H4 (acetyl Lys12).
Specificity:	This antibody detects endogenous levels of total Histone H4 protein only when acetylated at Lys12.
Applications:	WB, IHC, IF, ELISA
Recommended Dilutions:	IHC: 1:50-1:100, ELISA: 1:40000
Reactivity:	Human, Mouse, Rat
Immunogen:	Synthetic peptide derived from human Histone H4 around the acetylated site of Lys12 (amino acids 10-59).
Host:	Rabbit
Clonality:	Polyclonal
Isotype:	IgG
Conjugate:	Unconjugated
Purification:	Purified from rabbit serum by antigen affinity chromatography using the immunizing phospho peptide.
Molecular Weight:	11kDa
Product Form:	Liquid
Formulation:	Supplied in Phosphate Buffered Saline (without Mg ²⁺ and Ca ²⁺), pH 7.4, with 150mM NaCl, 0.02% Sodium Azide, and 50% Glycerol.
Storage:	Shipped at 4°C. Upon delivery aliquot and store at -20°C. Avoid freeze / thaw cycles.
Disclaimer:	This product is for research use only. It is not intended for diagnostic or therapeutic use.

Anti-Histone H4 (acetyl Lys12) Antibody (A94792)

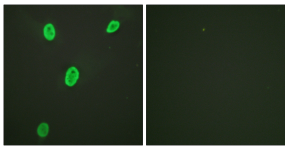
Images:



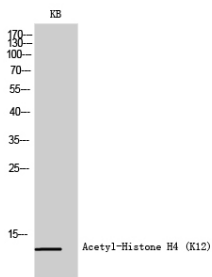
Western blot analysis of lysates from COS7 cells, treated with TSA 400nM 24h using Anti-Histone H4 (acetyl Lys12) Antibody. The right hand lane represents a negative control, where the antibody is blocked by the immunising peptide.



Immunohistochemical analysis of paraffin-embedded human breast carcinoma tissue using Anti-Histone H4 (acetyl Lys12) Antibody. The right hand panel represents a negative control, where the antibody was pre-incubated with the immunising peptide.



Immunofluorescence analysis of HeLa cells using Anti-Histone H4 (acetyl Lys12) Antibody. The right hand panel represents a negative control, where the antibody was pre-incubated with the immunising peptide.



Western blot analysis of KB cells using Anti-Histone H4 (acetyl Lys12) Antibody.