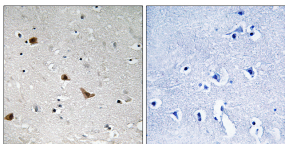


## Anti-IKK-gamma (phospho Ser376) Antibody (A95017)

### Specifications:

|                        |                                                                                                                                                        |
|------------------------|--------------------------------------------------------------------------------------------------------------------------------------------------------|
| Name:                  | Anti-IKK-gamma (phospho Ser376) Antibody                                                                                                               |
| Description:           | Rabbit polyclonal antibody to IKK-gamma (phospho Ser376).                                                                                              |
| Specificity:           | This antibody detects endogenous levels of IKK-gamma only when phosphorylated at Ser376.                                                               |
| Applications:          | IHC, ELISA                                                                                                                                             |
| Recommended Dilutions: | WB: 1:500-1:1000, IHC: 1:50-1:100, ELISA: 1:10000                                                                                                      |
| Reactivity:            | Human                                                                                                                                                  |
| Immunogen:             | Synthetic peptide derived from human IKK-gamma around the phosphorylation site of Ser376 (amino acids 342-391).                                        |
| Host:                  | Rabbit                                                                                                                                                 |
| Clonality:             | Polyclonal                                                                                                                                             |
| Isotype:               | IgG                                                                                                                                                    |
| Conjugate:             | Unconjugated                                                                                                                                           |
| Purification:          | Purified from rabbit serum by antigen affinity chromatography using the immunizing peptide.                                                            |
| Molecular Weight:      | 48kDa                                                                                                                                                  |
| Product Form:          | Liquid                                                                                                                                                 |
| Formulation:           | Supplied in Phosphate Buffered Saline (without Mg <sup>2+</sup> and Ca <sup>2+</sup> ), pH 7.4, with 150mM NaCl, 0.02% Sodium Azide, and 50% Glycerol. |
| Storage:               | Shipped at 4°C. Upon delivery aliquot and store at -20°C. Avoid freeze / thaw cycles.                                                                  |
| Disclaimer:            | This product is for research use only. It is not intended for diagnostic or therapeutic use.                                                           |

### Images:



Immunohistochemical analysis of paraffin-embedded human brain using Anti-IKK-gamma (phospho Ser376) Antibody. The right hand panel represents a negative control, where the antibody was pre-incubated with the immunising peptide.