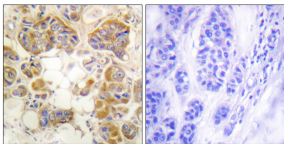


Anti-Collagen I Antibody (A95083)

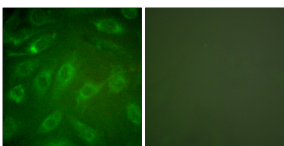
Specifications:

Name:	Anti-Collagen I Antibody
Description:	Rabbit polyclonal antibody to Collagen I.
Applications:	IHC, IF, ELISA
Recommended Dilutions:	IHC: 1:50-1:100, IF: 1:100-1:500, ELISA: 1:5000
Reactivity:	Human, Mouse, Rat
Immunogen:	Synthetic peptide derived from human Collagen I (amino acids 1-50).
Host:	Rabbit
Clonality:	Polyclonal
Isotype:	IgG
Conjugate:	Unconjugated
Purification:	Purified from rabbit serum by antigen affinity chromatography using the immunizing peptide.
Molecular Weight:	129kDa
Product Form:	Liquid
Formulation:	Supplied in Phosphate Buffered Saline (without Mg ²⁺ and Ca ²⁺), pH 7.4, with 150mM NaCl, 0.02% Sodium Azide, and 50% Glycerol.
Storage:	Shipped at 4°C. Upon delivery aliquot and store at -20°C. Avoid freeze / thaw cycles.
Disclaimer:	This product is for research use only. It is not intended for diagnostic or therapeutic use.

Images:



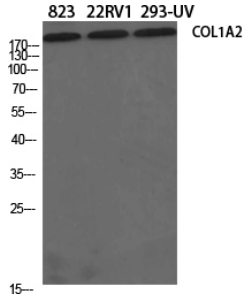
Immunohistochemical analysis of paraffin-embedded human breast carcinoma tissue using Anti-Collagen I Antibody. The right hand panel represents a negative control, where the antibody was pre-incubated with the immunising peptide.



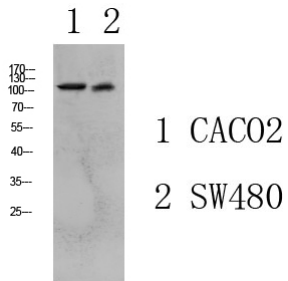
Immunofluorescence analysis of NIH/3T3 cells using Anti-Collagen I Antibody. The right hand panel represents a negative control, where the antibody was pre-incubated with the immunising peptide.

Anti-Collagen I Antibody (A95083)

Images continued:



Western blot analysis of various cells using Anti-Collagen I Antibody.



Western blot analysis of various lysate using Anti-Collagen I Antibody.