

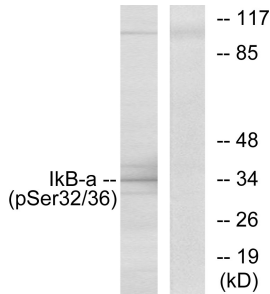
Anti-I kappa B alpha (phospho Ser32 + Ser36) Antibody (A95107)

Specifications:

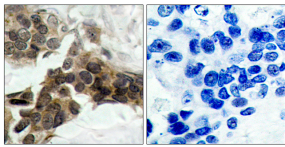
Name:	Anti-I kappa B alpha (phospho Ser32 + Ser36) Antibody
Description:	Rabbit polyclonal antibody to I kappa B alpha (phospho Ser32 + Ser36).
Specificity:	This antibody detects endogenous levels of IkappaB-alpha only when phosphorylated at Ser32/Ser36.
Applications:	WB, IHC, IF, ELISA
Recommended Dilutions:	IHC: 1:50-1:100, ELISA: 1:40000
Reactivity:	Human, Mouse, Rat
Immunogen:	Synthetic peptide derived from human IkappaB-alpha around the phosphorylation site of Ser32/Ser36 (amino acids 15-64).
Host:	Rabbit
Clonality:	Polyclonal
Isotype:	IgG
Conjugate:	Unconjugated
Purification:	Purified from rabbit serum by antigen affinity chromatography using the immunizing phospho peptide.
Molecular Weight:	35kDa
Product Form:	Liquid
Formulation:	Supplied in Phosphate Buffered Saline (without Mg ²⁺ and Ca ²⁺), pH 7.4, with 150mM NaCl, 0.02% Sodium Azide, and 50% Glycerol.
Storage:	Shipped at 4°C. Upon delivery aliquot and store at -20°C. Avoid freeze / thaw cycles.
Disclaimer:	This product is for research use only. It is not intended for diagnostic or therapeutic use.

Anti-I kappa B alpha (phospho Ser32 + Ser36) Antibody (A95107)

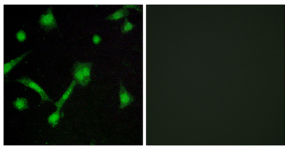
Images:



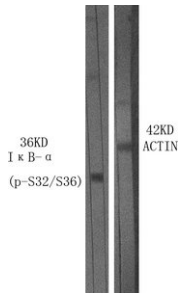
Western blot analysis of lysates from COS7 cells using Anti-I kappa B alpha (phospho Ser32 + Ser36) Antibody. The right hand lane represents a negative control, where the antibody is blocked by the immunising peptide.



Immunohistochemical analysis of paraffin-embedded human breast carcinoma using Anti-I kappa B alpha (phospho Ser32 + Ser36) Antibody. The right hand panel represents a negative control, where the antibody was pre-incubated with the immunising peptide.



Immunofluorescence analysis of LOVO cells using Anti-I kappa B alpha (phospho Ser32 + Ser36) Antibody. The right hand panel represents a negative control, where the antibody was pre-incubated with the immunising peptide.



Western blot analysis of various cells using Anti-I kappa B alpha (phospho Ser32 + Ser36) Antibody.