

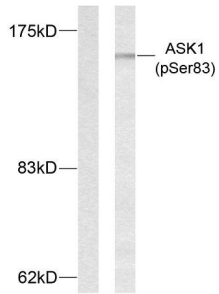
Anti-ASK1 (phospho Ser83) Antibody (A95285)

Specifications:

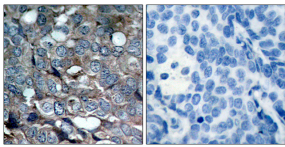
Name:	Anti-ASK1 (phospho Ser83) Antibody
Description:	Rabbit polyclonal antibody to ASK1 (phospho Ser83).
Specificity:	This antibody detects endogenous levels of ASK1 only when phosphorylated at Ser83.
Applications:	WB, IHC, ELISA
Recommended Dilutions:	WB: 1:500-1:1000, IHC: 1:50-1:100, ELISA: 1:20000
Reactivity:	Human
Immunogen:	Synthetic peptide derived from human ASK1 around the phosphorylation site of Ser83 (amino acids 49-98).
Host:	Rabbit
Clonality:	Polyclonal
Isotype:	IgG
Conjugate:	Unconjugated
Purification:	Purified from rabbit serum by antigen affinity chromatography using the immunizing phospho peptide.
Molecular Weight:	154kDa
Product Form:	Liquid
Formulation:	Supplied in Phosphate Buffered Saline (without Mg ²⁺ and Ca ²⁺), pH 7.4, with 150mM NaCl, 0.02% Sodium Azide, and 50% Glycerol.
Storage:	Shipped at 4°C. Upon delivery aliquot and store at -20°C. Avoid freeze / thaw cycles.
Disclaimer:	This product is for research use only. It is not intended for diagnostic or therapeutic use.

Anti-ASK1 (phospho Ser83) Antibody (A95285)

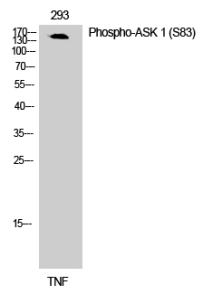
Images:



Western blot analysis of lysates from MDA-MB-435 cells treated with TNF-alpha using Anti-ASK1 (phospho Ser83) Antibody. The left hand lane represents a negative control, where the antibody is blocked by the immunising peptide.



Immunohistochemical analysis of paraffin-embedded human breast carcinoma using Anti-ASK1 (phospho Ser83) Antibody. The right hand panel represents a negative control, where the antibody was pre-incubated with the immunising peptide.



Western blot analysis of 293 cells using Anti-ASK1 (phospho Ser83) Antibody.