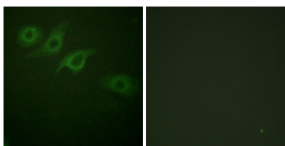


## Anti-Interferon-gamma Receptor alpha chain Antibody (A95392)

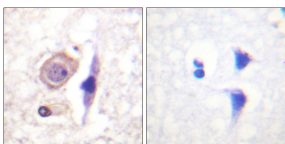
### Specifications:

Name:	Anti-Interferon-gamma Receptor alpha chain Antibody
Description:	Rabbit polyclonal antibody to Interferon-gamma Receptor alpha chain.
Applications:	WB, IHC, IF, ELISA
Reactivity:	Human, Mouse, Rat
Immunogen:	Synthetic peptide derived from human Interferon-gamma Receptor alpha chain (amino acids 431-480).
Host:	Rabbit
Clonality:	Polyclonal
Isotype:	IgG
Conjugate:	Unconjugated
Purification:	Immunogen affinity purified.
Molecular Weight:	54kDa
Product Form:	Liquid
Formulation:	Supplied in Phosphate Buffered Saline (without Mg <sup>2+</sup> and Ca <sup>2+</sup> ), pH 7.4, with 150mM NaCl, 0.02% Sodium Azide, and 50% Glycerol.
Disclaimer:	This product is for research use only. It is not intended for diagnostic or therapeutic use.

### Images:



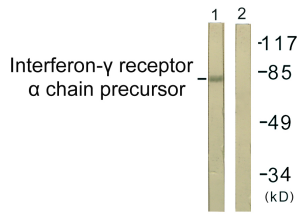
Immunofluorescence analysis of HepG2 cells using Anti-Interferon-gamma Receptor alpha chain Antibody. The right hand panel represents a negative control, where the antibody was pre-incubated with the immunising peptide.



Immunohistochemical analysis of paraffin-embedded human brain tissue using Anti-Interferon-gamma Receptor alpha chain Antibody. The right hand panel represents a negative control, where the antibody was pre-incubated with the immunising peptide.

## Anti-Interferon-gamma Receptor alpha chain Antibody (A95392)

Images continued:



Western blot analysis of lysates from COS7 cells using Anti-Interferon-gamma Receptor alpha chain Antibody. The right hand lane represents a negative control, where the antibody is blocked by the immunising peptide.