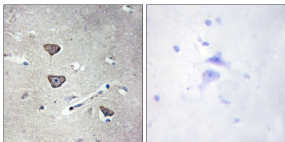


Anti-5-HT-2C Antibody (A95467)

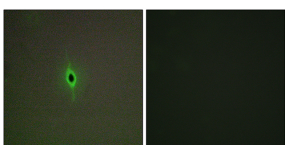
Specifications:

Name:	Anti-5-HT-2C Antibody
Description:	Rabbit polyclonal antibody to 5-HT-2C.
Applications:	IHC, IF, ELISA
Recommended Dilutions:	IHC: 1:50-1:100, IF: 1:100-1:500, ELISA: 1:5000
Reactivity:	Human, Mouse, Rat
Immunogen:	Synthetic peptide derived from human 5-HT-2C (amino acids 161-210).
Host:	Rabbit
Clonality:	Polyclonal
Isotype:	IgG
Conjugate:	Unconjugated
Purification:	Purified from rabbit serum by antigen affinity chromatography using the immunizing peptide.
Molecular Weight:	51kDa
Product Form:	Liquid
Formulation:	Supplied in Phosphate Buffered Saline (without Mg ²⁺ and Ca ²⁺), pH 7.4, with 150mM NaCl, 0.02% Sodium Azide, and 50% Glycerol.
Storage:	Shipped at 4°C. Upon delivery aliquot and store at -20°C. Avoid freeze / thaw cycles.
Disclaimer:	This product is for research use only. It is not intended for diagnostic or therapeutic use.

Images:



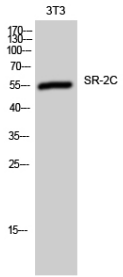
Immunohistochemical analysis of paraffin-embedded human brain tissue using Anti-5-HT-2C Antibody. The right hand panel represents a negative control, where the antibody was pre-incubated with the immunising peptide.



Immunofluorescence analysis of A549 cells using Anti-5-HT-2C Antibody. The right hand panel represents a negative control, where the antibody was pre-incubated with the immunising peptide.

Anti-5-HT-2C Antibody (A95467)

Images continued:



Western blot analysis of 3T3 cells using Anti-5-HT-2C Antibody.