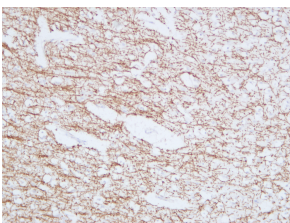


Anti-Myelin Basic Protein Antibody [ABT-MBP] (A95520)

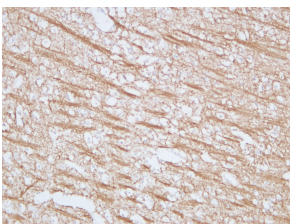
Specifications:

Name:	Anti-Myelin Basic Protein Antibody [ABT-MBP]
Description:	Mouse monoclonal (ABT-MBP) antibody to Myelin Basic Protein.
Applications:	IHC
Reactivity:	Human
Immunogen:	Synthetic peptide derived from human Myelin Basic Protein.
Host:	Mouse
Clonality:	Monoclonal
Clone ID:	ABT-MBP
Isotype:	IgG
Conjugate:	Unconjugated
Purification:	Immunogen affinity purified.
Product Form:	Liquid
Formulation:	Supplied in Tris Buffered Saline with 0.5% Bovine Serum Albumin and 0.1% Kathon CG/ICP.
Disclaimer:	This product is for research use only. It is not intended for diagnostic or therapeutic use.

Images:



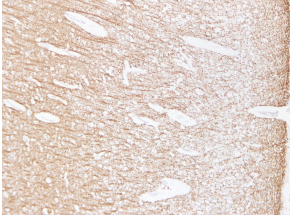
Immunohistochemical analysis of paraffin-embedded human Brain using Anti-Myelin Basic Protein Antibody.



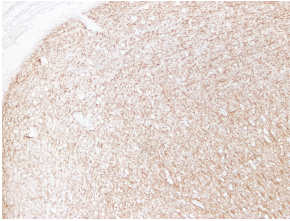
Immunohistochemical analysis of paraffin-embedded human Brain using Anti-Myelin Basic Protein Antibody.

Anti-Myelin Basic Protein Antibody [ABT-MBP] (A95520)

Images continued:



Immunohistochemical analysis of paraffin-embedded human Brain using Anti-Myelin Basic Protein Antibody.



Immunohistochemical analysis of paraffin-embedded human Brain using Anti-Myelin Basic Protein Antibody.