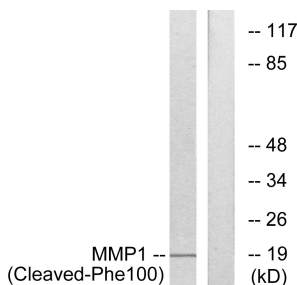


Anti-MMP1 (cleaved Phe100) Antibody (A95960)

Specifications:

Name:	Anti-MMP1 (cleaved Phe100) Antibody
Description:	Rabbit polyclonal antibody to MMP1 (cleaved Phe100).
Specificity:	This antibody detects endogenous levels of fragment of activated MMP1 resulting from cleavage adjacent to Phe100.
Applications:	WB, ELISA
Recommended Dilutions:	WB: 1:500-1:1000, ELISA: 1:10000
Reactivity:	Human
Immunogen:	Synthetic peptide derived from human MMP1 (amino acids 81-130).
Host:	Rabbit
Clonality:	Polyclonal
Isotype:	IgG
Conjugate:	Unconjugated
Purification:	Purified from rabbit serum by antigen affinity chromatography using the immunizing peptide.
Molecular Weight:	19kDa
Product Form:	Liquid
Formulation:	Supplied in Phosphate Buffered Saline (without Mg ²⁺ and Ca ²⁺), pH 7.4, with 150mM NaCl, 0.02% Sodium Azide, and 50% Glycerol.
Storage:	Shipped at 4°C. Upon delivery aliquot and store at -20°C. Avoid freeze / thaw cycles.
Disclaimer:	This product is for research use only. It is not intended for diagnostic or therapeutic use.

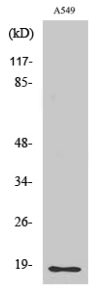
Images:



Western blot analysis of lysates from A549 cells, treated with etoposide 25uM 24h using Anti-MMP1 (cleaved Phe100) Antibody. The right hand lane represents a negative control, where the antibody is blocked by the immunising peptide.

Anti-MMP1 (cleaved Phe100) Antibody (A95960)

Images continued:



Western blot analysis of various cells using Anti-MMP1 (cleaved Phe100) Antibody.