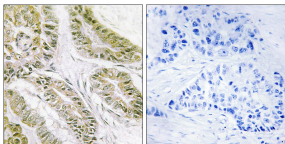


## Anti-BAX Antibody (A96467)

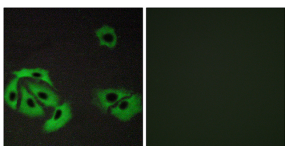
### Specifications:

Name:	Anti-BAX Antibody
Description:	Rabbit polyclonal antibody to BAX.
Applications:	IHC, IF, ELISA
Recommended Dilutions:	IHC: 1:50-1:100, IF: 1:100-1:500, ELISA: 1:1000
Reactivity:	Human, Mouse, Rat
Immunogen:	Synthetic peptide derived from human BAX (amino acids 80-129).
Host:	Rabbit
Clonality:	Polyclonal
Isotype:	IgG
Conjugate:	Unconjugated
Purification:	Purified from rabbit serum by antigen affinity chromatography using the immunizing peptide.
Molecular Weight:	15kDa
Product Form:	Liquid
Formulation:	Supplied in Phosphate Buffered Saline (without Mg <sup>2+</sup> and Ca <sup>2+</sup> ), pH 7.4, with 150mM NaCl, 0.02% Sodium Azide, and 50% Glycerol.
Storage:	Shipped at 4°C. Upon delivery aliquot and store at -20°C. Avoid freeze / thaw cycles.
Disclaimer:	This product is for research use only. It is not intended for diagnostic or therapeutic use.

### Images:



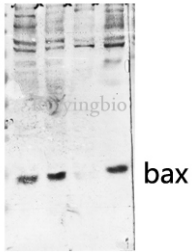
Immunohistochemical analysis of paraffin-embedded human lung carcinoma tissue using Anti-BAX Antibody. The right hand panel represents a negative control, where the antibody was pre-incubated with the immunising peptide.



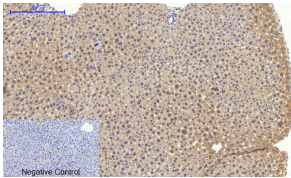
Immunofluorescence analysis of A549 cells using Anti-BAX Antibody. The right hand panel represents a negative control, where the antibody was pre-incubated with the immunising peptide.

## Anti-BAX Antibody (A96467)

Images continued:



Western blot analysis of HeLa MCF 7 U2OS 3T3 cells using Anti-BAX Antibody.



Immunohistochemical analysis of paraffin-embedded mouse liver tissue using Anti-BAX Antibody at 1:200 (4°C overnight). Negative control was secondary antibody only.