

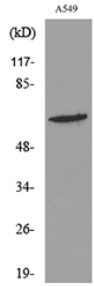
Anti-K8 (acetyl Lys483) Antibody (A96661)

Specifications:

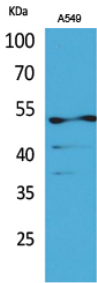
Name:	Anti-K8 (acetyl Lys483) Antibody
Description:	Rabbit polyclonal antibody to K8 (acetyl Lys483).
Specificity:	This antibody detects endogenous levels of K8 protein only when acetylated at Lys483.
Applications:	WB, ELISA
Recommended Dilutions:	WB: 1:500-1:1000, ELISA: 1:10000
Reactivity:	Human
Immunogen:	Synthetic Acetyl-peptide derived from human K8 around the Acetylation site of Lys483 (amino acids 434-483).
Host:	Rabbit
Clonality:	Polyclonal
Isotype:	IgG
Conjugate:	Unconjugated
Purification:	Purified from rabbit serum by antigen affinity chromatography using the immunizing acetylated peptide.
Molecular Weight:	53kDa
Product Form:	Liquid
Formulation:	Supplied in Phosphate Buffered Saline (without Mg ²⁺ and Ca ²⁺), pH 7.4, with 150mM NaCl, 0.02% Sodium Azide, and 50% Glycerol.
Storage:	Shipped at 4°C. Upon delivery aliquot and store at -20°C. Avoid freeze / thaw cycles.
Disclaimer:	This product is for research use only. It is not intended for diagnostic or therapeutic use.

Anti-K8 (acetyl Lys483) Antibody (A96661)

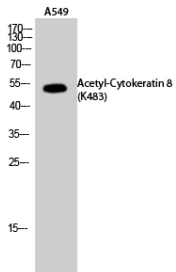
Images:



Western blot analysis of lysate from A549 cells using Anti-K8 (acetyl Lys483) Antibody.



Western blot analysis of A549 cells using Anti-K8 (acetyl Lys483) Antibody.



Western blot analysis of A549 cells using Anti-K8 (acetyl Lys483) Antibody.