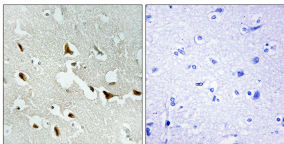


Anti-IRS-1 Antibody (A97024)

Specifications:

Name:	Anti-IRS-1 Antibody
Description:	Rabbit polyclonal antibody to IRS-1.
Applications:	IHC, ELISA
Recommended Dilutions:	IHC: 1:50-1:100, ELISA: 1:20000
Reactivity:	Human, Mouse, Rat
Immunogen:	Synthetic peptide derived from human IRS-1 (amino acids 603-652).
Host:	Rabbit
Clonality:	Polyclonal
Isotype:	IgG
Conjugate:	Unconjugated
Purification:	Purified from rabbit serum by antigen affinity chromatography using the immunizing peptide.
Molecular Weight:	131kDa
Product Form:	Liquid
Formulation:	Supplied in Phosphate Buffered Saline (without Mg ²⁺ and Ca ²⁺), pH 7.4, with 150mM NaCl, 0.02% Sodium Azide, and 50% Glycerol.
Storage:	Shipped at 4°C. Upon delivery aliquot and store at -20°C. Avoid freeze / thaw cycles.
Disclaimer:	This product is for research use only. It is not intended for diagnostic or therapeutic use.

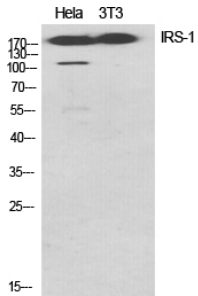
Images:



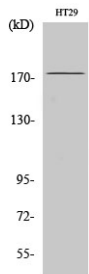
Immunohistochemical analysis of paraffin-embedded human brain tissue using Anti-IRS-1 Antibody. The right hand panel represents a negative control, where the antibody was pre-incubated with the immunising peptide.

Anti-IRS-1 Antibody (A97024)

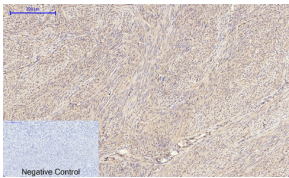
Images continued:



Western blot analysis of various cells using Anti-IRS-1 Antibody.



Western blot analysis of HT29 cells using Anti-IRS-1 Antibody.



Immunohistochemical analysis of paraffin-embedded human uterus tissue using Anti-IRS-1 Antibody at 1:200 (4°C overnight). Negative control was secondary antibody only.