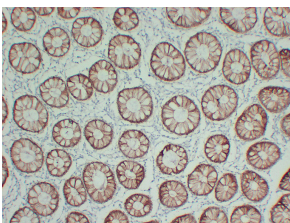


Anti-Claudin 4 Antibody [ABT-CLD4] (A97073)

Specifications:

Name:	Anti-Claudin 4 Antibody [ABT-CLD4]
Description:	Mouse monoclonal (ABT-CLD4) antibody to Claudin 4.
Applications:	IHC, WB
Reactivity:	Human
Immunogen:	Synthetic peptide derived from human Claudin 4.
Host:	Mouse
Clonality:	Monoclonal
Clone ID:	ABT-CLD4
Isotype:	IgG
Conjugate:	Unconjugated
Purification:	Immunogen affinity purified.
Product Form:	Liquid
Formulation:	Supplied in Tris Buffered Saline with 0.5% Bovine Serum Albumin and 0.1% Kathon CG/ICP.
Disclaimer:	This product is for research use only. It is not intended for diagnostic or therapeutic use.

Images:



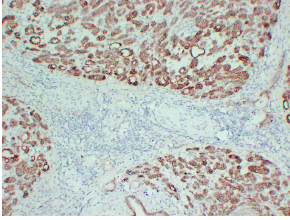
Immunohistochemical analysis of paraffin-embedded human Colon using Anti-Claudin 4 Antibody.



Immunohistochemical analysis of paraffin-embedded human Colon using Anti-Claudin 4 Antibody.

Anti-Claudin 4 Antibody [ABT-CLD4] (A97073)

Images continued:



Immunohistochemical analysis of paraffin-embedded human Pancreatic carcinoma using Anti-Claudin 4 Antibody.