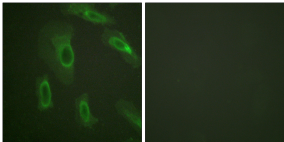


## Anti-CD227 Antibody (A97096)

### Specifications:

|                        |  |
|------------------------|--|
| Name:                  | Anti-CD227 Antibody  |
| Description:           | Rabbit polyclonal antibody to CD227.   |
| Applications:          | IHC, IF, ELISA   |
| Recommended Dilutions: | IHC: 1:50-1:100, IF: 1:100-1:500, ELISA: 1:1000  |
| Reactivity:            | Human, Mouse   |
| Immunogen:             | Synthetic peptide derived from human CD227/Mucin 1 (amino acids 1204-1253).  |
| Host:                  | Rabbit   |
| Clonality:             | Polyclonal   |
| Isotype:               | IgG  |
| Conjugate:             | Unconjugated   |
| Purification:          | Purified from rabbit serum by antigen affinity chromatography using the immunizing peptide.  |
| Molecular Weight:      | 122kDa   |
| Product Form:          | Liquid   |
| Formulation:           | Supplied in Phosphate Buffered Saline (without Mg <sup>2+</sup> and Ca <sup>2+</sup> ), pH 7.4, with 150mM NaCl, 0.02% Sodium Azide, and 50% Glycerol. |
| Storage:               | Shipped at 4°C. Upon delivery aliquot and store at -20°C. Avoid freeze / thaw cycles.  |
| Disclaimer:            | This product is for research use only. It is not intended for diagnostic or therapeutic use.   |

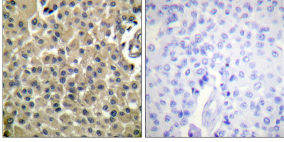
### Images:



Immunofluorescence analysis of HeLa cells using Anti-CD227 Antibody. The right hand panel represents a negative control, where the antibody was pre-incubated with the immunising peptide.

## Anti-CD227 Antibody (A97096)

Images continued:



Immunohistochemical analysis of paraffin-embedded human breast carcinoma tissue using Anti-CD227 Antibody. The right hand panel represents a negative control, where the antibody was pre-incubated with the immunising peptide.