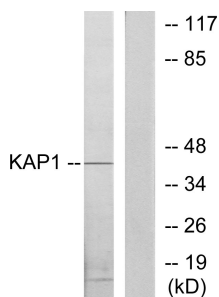


## Anti-KAP1 Antibody (A98071)

### Specifications:

Name:	Anti-KAP1 Antibody
Description:	Rabbit polyclonal antibody to KAP1.
Applications:	WB, ELISA
Recommended Dilutions:	WB: 1:500-1:1000, ELISA: 1:20000
Reactivity:	Human, Mouse, Rat
Immunogen:	Synthetic peptide derived from human KAP1 (amino acids 106-155).
Host:	Rabbit
Clonality:	Polyclonal
Isotype:	IgG
Conjugate:	Unconjugated
Purification:	Purified from rabbit serum by antigen affinity chromatography using the immunizing peptide.
Molecular Weight:	43kDa
Product Form:	Liquid
Formulation:	Supplied in Phosphate Buffered Saline (without Mg <sup>2+</sup> and Ca <sup>2+</sup> ), pH 7.4, with 150mM NaCl, 0.02% Sodium Azide, and 50% Glycerol.
Storage:	Shipped at 4°C. Upon delivery aliquot and store at -20°C. Avoid freeze / thaw cycles.
Disclaimer:	This product is for research use only. It is not intended for diagnostic or therapeutic use.

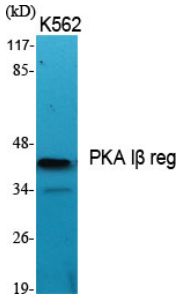
### Images:



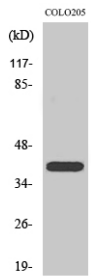
Western blot analysis of lysates from COLO205 cells using Anti-KAP1 Antibody. The right hand lane represents a negative control, where the antibody is blocked by the immunising peptide.

## Anti-KAP1 Antibody (A98071)

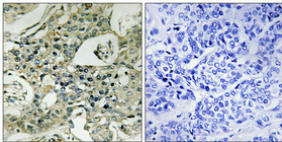
Images continued:



Western blot analysis of various cells using Anti-KAP1 Antibody.



Western blot analysis of COLO205 cells using Anti-KAP1 Antibody.



Immunohistochemical analysis of paraffin-embedded human breast cancer using Anti-KAP1 Antibody 1:100 (4°C overnight). The right hand panel represents a negative control, where the antibody was pre-incubated with the immunising peptide.