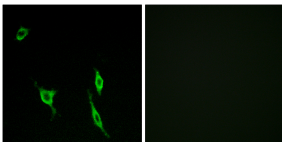


Anti-DCC Antibody (A98529)

Specifications:

Name:	Anti-DCC Antibody
Description:	Rabbit polyclonal antibody to DCC.
Applications:	IF, ELISA
Recommended Dilutions:	IF: 1:100-1:500, ELISA: 1:20000
Reactivity:	Human, Mouse, Rat
Immunogen:	Synthetic peptide derived from human DCC (amino acids 441-490).
Host:	Rabbit
Clonality:	Polyclonal
Isotype:	IgG
Conjugate:	Unconjugated
Purification:	Purified from rabbit serum by antigen affinity chromatography using the immunizing peptide.
Molecular Weight:	158kDa
Product Form:	Liquid
Formulation:	Supplied in Phosphate Buffered Saline (without Mg ²⁺ and Ca ²⁺), pH 7.4, with 150mM NaCl, 0.02% Sodium Azide, and 50% Glycerol.
Storage:	Shipped at 4°C. Upon delivery aliquot and store at -20°C. Avoid freeze / thaw cycles.
Disclaimer:	This product is for research use only. It is not intended for diagnostic or therapeutic use.

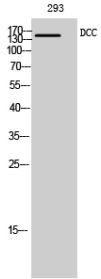
Images:



Immunofluorescence analysis of LOVO cells using Anti-DCC Antibody. The right hand panel represents a negative control, where the antibody was pre-incubated with the immunising peptide.

Anti-DCC Antibody (A98529)

Images continued:



Western blot analysis of 293 cells using Anti-DCC Antibody.