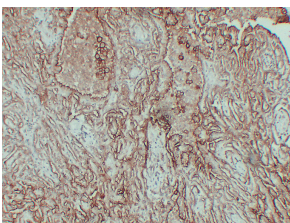


Anti-CA 125 Antibody [ABT-MUC16] (A99327)

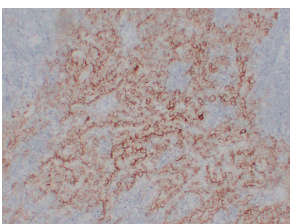
Specifications:

Name:	Anti-CA 125 Antibody [ABT-MUC16]
Description:	Mouse monoclonal (ABT-MUC16) antibody to CA 125.
Applications:	IHC
Reactivity:	Human
Immunogen:	Synthetic peptide derived from human CA-125.
Host:	Mouse
Clonality:	Monoclonal
Clone ID:	ABT-MUC16
Isotype:	IgG
Conjugate:	Unconjugated
Purification:	Immunogen affinity purified.
Product Form:	Liquid
Formulation:	Supplied in Tris Buffered Saline with 0.5% Bovine Serum Albumin and 0.1% Kathon CG/ICP.
Disclaimer:	This product is for research use only. It is not intended for diagnostic or therapeutic use.

Images:



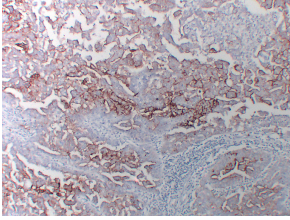
Immunohistochemical analysis of paraffin-embedded human Mesothelioma using Anti-CA 125 Antibody.



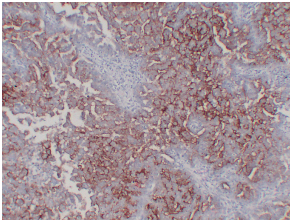
Immunohistochemical analysis of paraffin-embedded human Mesothelioma using Anti-CA 125 Antibody.

Anti-CA 125 Antibody [ABT-MUC16] (A99327)

Images continued:



Immunohistochemical analysis of paraffin-embedded human Ovarian serous carcinoma using Anti-CA 125 Antibody.



Immunohistochemical analysis of paraffin-embedded human Ovarian serous carcinoma using Anti-CA 125 Antibody.