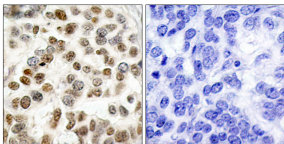


## Anti-BRCA1 Antibody (A99334)

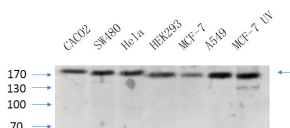
### Specifications:

Name:	Anti-BRCA1 Antibody
Description:	Rabbit polyclonal antibody to BRCA1.
Applications:	IHC, ELISA
Recommended Dilutions:	IHC: 1:50-1:100, ELISA: 1:4000
Reactivity:	Human, Rat
Immunogen:	Synthetic peptide derived from human BRCA1 (amino acids 1391-1440).
Host:	Rabbit
Clonality:	Polyclonal
Isotype:	IgG
Conjugate:	Unconjugated
Purification:	Purified from rabbit serum by antigen affinity chromatography using the immunizing peptide.
Molecular Weight:	207kDa
Product Form:	Liquid
Formulation:	Supplied in Phosphate Buffered Saline (without Mg <sup>2+</sup> and Ca <sup>2+</sup> ), pH 7.4, with 150mM NaCl, 0.02% Sodium Azide, and 50% Glycerol.
Storage:	Shipped at 4°C. Upon delivery aliquot and store at -20°C. Avoid freeze / thaw cycles.
Disclaimer:	This product is for research use only. It is not intended for diagnostic or therapeutic use.

### Images:



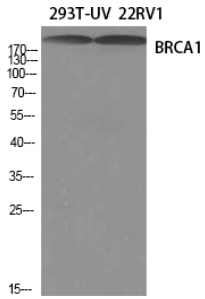
Immunohistochemical analysis of paraffin-embedded human breast carcinoma tissue using Anti-BRCA1 Antibody. The right hand panel represents a negative control, where the antibody was pre-incubated with the immunising peptide.



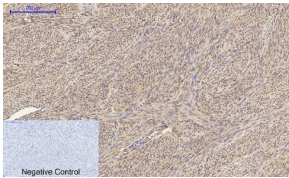
Western blot analysis of various cells using Anti-BRCA1 Antibody at 1:1,000 (4°C overnight). Goat Anti-Rabbit IgG (IRDye 800) was used as a secondary at 1:5,000 (25°C, 1 hour).

## Anti-BRCA1 Antibody (A99334)

Images continued:



Immunohistochemical analysis of paraffin-embedded human uterus tissue using Anti-BRCA1 Antibody at 1:200 (4°C overnight). Negative control was secondary antibody only.



Immunohistochemical analysis of paraffin-embedded human uterus cancer tissue using Anti-BRCA1 Antibody at 1:200 (4°C overnight). Negative control was secondary antibody only.