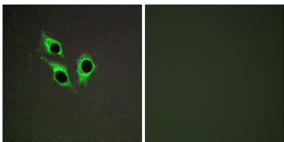


Anti-TM16J Antibody (A99591)

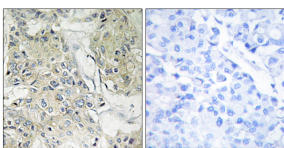
Specifications:

| | |
|------------------------|--|
| Name: | Anti-TM16J Antibody |
| Description: | Rabbit polyclonal antibody to TM16J. |
| Applications: | IHC, IF, ELISA |
| Recommended Dilutions: | IHC: 1:50-1:100, IF: 1:100-1:500, ELISA: 1:1000 |
| Reactivity: | Human |
| Immunogen: | Synthetic peptide derived from human TM16J (amino acids 481-530). |
| Host: | Rabbit |
| Clonality: | Polyclonal |
| Isotype: | IgG |
| Conjugate: | Unconjugated |
| Purification: | Purified from rabbit serum by antigen affinity chromatography using the immunizing peptide. |
| Molecular Weight: | 90kDa |
| Product Form: | Liquid |
| Formulation: | Supplied in Phosphate Buffered Saline (without Mg ²⁺ and Ca ²⁺), pH 7.4, with 150mM NaCl, 0.02% Sodium Azide, and 50% Glycerol. |
| Storage: | Shipped at 4°C. Upon delivery aliquot and store at -20°C. Avoid freeze / thaw cycles. |
| Disclaimer: | This product is for research use only. It is not intended for diagnostic or therapeutic use. |

Images:



Immunofluorescence analysis of HepG2 cells using Anti-TM16J Antibody. The right hand panel represents a negative control, where the antibody was pre-incubated with the immunising peptide.



Immunohistochemical analysis of paraffin-embedded human breast carcinoma tissue using Anti-TM16J Antibody. The right hand panel represents a negative control, where the antibody was pre-incubated with the immunising peptide.