

Anti-PRF1 Antibody (A99857)

Specifications:

| | |
|------------------------|--|
| Name: | Anti-PRF1 Antibody |
| Description: | Rabbit polyclonal antibody to PRF1. |
| Applications: | WB, IHC, ELISA |
| Recommended Dilutions: | WB: 1:500-1:2000, IHC-P: 1:50-1:300, ELISA: 1:10000 |
| Reactivity: | Human |
| Immunogen: | Synthetic peptide derived from the C-terminal region of human PRF1 (amino acids 451-500). |
| Host: | Rabbit |
| Clonality: | Polyclonal |
| Isotype: | IgG |
| Conjugate: | Unconjugated |
| Purification: | The antibody was affinity-purified from rabbit antiserum by affinity-chromatography using epitope-specific peptide. |
| Molecular Weight: | 61kDa |
| Product Form: | Liquid |
| Formulation: | Supplied in Phosphate Buffered Saline (without Mg ²⁺ and Ca ²⁺), pH 7.4, with 150mM NaCl, 0.02% Sodium Azide, and 50% Glycerol. |
| Storage: | Shipped at 4°C. Upon delivery aliquot and store at -20°C. Avoid freeze / thaw cycles. |
| Disclaimer: | This product is for research use only. It is not intended for diagnostic or therapeutic use. |

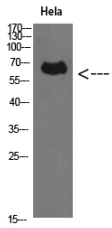
Images:

Western blot analysis of extracts from Hela cells using Anti-PRF1 Antibody.

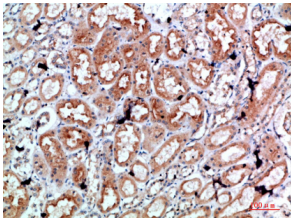


Anti-PRF1 Antibody (A99857)

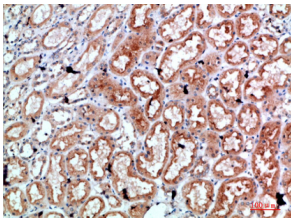
Images continued:



Western blot analysis of HeLa cells using Anti-PRF1 Antibody.



Immunohistochemical analysis of paraffin-embedded human kidney using Anti-PRF1 Antibody.



Immunohistochemical analysis of paraffin-embedded human kidney using Anti-PRF1 Antibody.