

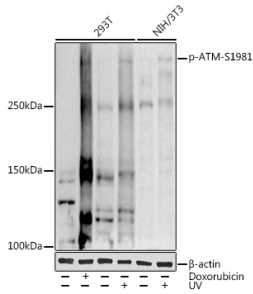
## Anti-ATM (phospho Ser1981) Antibody (A10862)

### Specifications:

|                        |  |
|------------------------|--|
| Name:                  | Anti-ATM (phospho Ser1981) Antibody  |
| Description:           | Rabbit polyclonal antibody to ATM (phospho Ser1981).   |
| Applications:          | WB   |
| Recommended Dilutions: | WB: 1:500-1:1,000  |
| Reactivity:            | Human, Mouse   |
| Immunogen:             | A synthetic phosphorylated peptide around S1981 of human ATM (NP_000042.3).                  |
| Sequence:              | EGSQS  |
| Host:                  | Rabbit   |
| Clonality:             | Polyclonal   |
| Isotype:               | IgG  |
| Conjugate:             | Unconjugated   |
| Purification:          | Affinity purification.   |
| Molecular Weight:      | 370 kDa  |
| Product Form:          | Liquid   |
| Formulation:           | Supplied in Phosphate Buffered Saline, pH 7.3, with 50% Glycerol and 0.01% Thiomersal.       |
| Storage:               | Shipped at 4°C. Upon delivery aliquot and store at -20°C. Avoid freeze / thaw cycles.        |
| Disclaimer:            | This product is for research use only. It is not intended for diagnostic or therapeutic use. |

## Anti-ATM (phospho Ser1981) Antibody (A10862)

### Images:



Western blot analysis of extracts of various cell lines, using Anti-ATM (phospho Ser1981) Antibody (A10862) at 1:1,000 dilution. 293T cells were treated by Doxorubicin (0.5  $\mu$ M) at 37°C for 24 hours. 293T cells were treated by UV at room temperature for 15-30 minutes. NIH/3T3 cells were treated by UV at room temperature for 15-30 minutes. The secondary antibody was Goat Anti-Rabbit IgG H&L Antibody (HRP) at 1:10,000 dilution. Lysates/proteins were present at 25 $\mu$ g per lane. The blocking buffer used was 3% non-fat dry milk in TBST. Detection was with a ECL Basic Kit. Exposure time: 180s.