

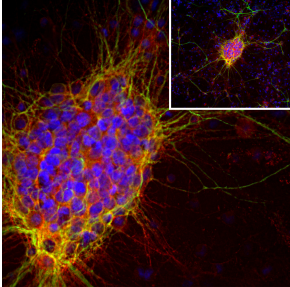
## Anti-Doublecortin Antibody [3E1] (A85376)

### Specifications:

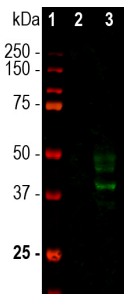
Name:	Anti-Doublecortin Antibody [3E1]
Description:	Mouse monoclonal [3E1] antibody to Doublecortin.
Applications:	WB, ICC/IF, IHC
Recommended Dilutions:	WB: 1:1,000, ICC/IF: 1:1,000, IHC: 1:1,000
Reactivity:	Human, Rat, Mouse
Immunogen:	Recombinant full-length human Lis-A isoform of Doublecortin, expressed in and purified from E. coli.
Host:	Mouse
Clonality:	Monoclonal
Clone ID:	3E1
Isotype:	IgG2a
Conjugate:	Unconjugated
Purification:	Immunogen affinity purification.
Concentration:	1 mg/ml
Molecular Weight:	35-45 kDa
Product Form:	Liquid
Formulation:	Supplied in Phosphate Buffered Saline with 50% Glycerol and 5mM Sodium Azide.
Storage:	Shipped at 4°C. Upon delivery aliquot and store at -20°C. Avoid freeze / thaw cycles.
Disclaimer:	This product is for research use only. It is not intended for diagnostic or therapeutic use.

## Anti-Doublecortin Antibody [3E1] (A85376)

### Images:



Immunofluorescent analysis of cortical neuron-glia cell culture from E20 rat stained with Anti-Doublecortin Antibody [3E1] (A85376), dilution 1:1,000, in red, and co-stained with Anti-MAP2 Antibody (A85363), dilution 1:10,000, in green. The blue is DAPI staining of nuclear DNA. The doublecortin antibody reveals strong cytoplasmic staining in a population of small developing neurons and their processes, while the MAP2 antibody stains dendrites and perikarya of mature neurons. Doublecortin antibody is an excellent marker of early developing neuronal cells.



Western blot analysis of rat whole brain lysates using Anti-Doublecortin Antibody [3E1] (A85376), dilution 1:1,000, in green. The lanes contain: [1] protein standard (red), [2] adult rat brain, [3] embryonic E20 rat brain. The strong bands at 40 kDa and 45 kDa correspond to the doublecortin protein, detected only in the developing brain.