

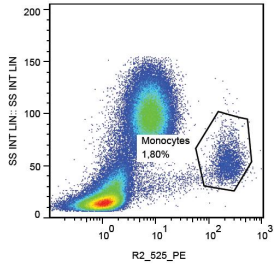
## Anti-CD112 Antibody [R2.525] (PE) (A86336)

### Specifications:

Name:	Anti-CD112 Antibody [R2.525] (PE)
Description:	Mouse monoclonal [R2.525] antibody to CD112 (PE).
Specificity:	The mouse monoclonal antibody R2.525 recognizes CD112, a type I transmembrane glycoprotein expressed by myelomonocytic and megakaryocytic cells, and by CD34+ hematopoietic progenitors.
Applications:	Flow Cytometry
Recommended Dilutions:	Flow Cytometry: This reagent is designed for analysis of human blood cells using 10 µl reagent / 100 µl of whole blood or 10 <sup>6</sup> cells in a suspension.
Reactivity:	Human
Immunogen:	NIH/3T3 cells transfected with human Nectin-2.
Host:	Mouse
Clonality:	Monoclonal
Clone ID:	R2.525
Isotype:	IgG1
Light Chains:	kappa
Conjugate:	PE
Purification:	This antibody is conjugated with PE under optimum conditions. The conjugate is purified by size-exclusion chromatography.
Product Form:	Liquid
Formulation:	Supplied in Phosphate Buffered Saline with 15 mM Sodium Azide.
Storage:	Store in the dark at 2-8°C. Do not freeze!
Disclaimer:	This product is for research use only. It is not intended for diagnostic or therapeutic use.

## Anti-CD112 Antibody [R2.525] (PE) (A86336)

Images:



Surface staining of human peripheral blood using Anti-CD112 Antibody (A86336).