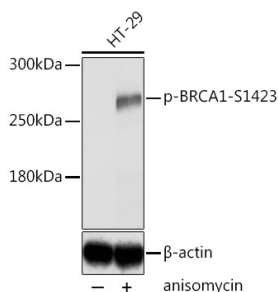


## Anti-BRCA1 (phospho Ser1423) Antibody (A10901)

### Specifications:

Name:	Anti-BRCA1 (phospho Ser1423) Antibody
Description:	Rabbit polyclonal antibody to BRCA1 (phospho Ser1423).
Applications:	WB, IHC, ICC/IF
Recommended Dilutions:	WB: 1:500-1:2,000, IHC: 1:50-1:200, ICC/IF: 1:50-1:200
Reactivity:	Human, Mouse, Rat
Immunogen:	A synthetic phosphorylated peptide around S1423 of human BRCA1 (NP_009225.1).
Sequence:	HGSQP
Host:	Rabbit
Clonality:	Polyclonal
Isotype:	IgG
Conjugate:	Unconjugated
Purification:	Affinity purification.
Molecular Weight:	270 kDa
Product Form:	Liquid
Formulation:	Supplied in Phosphate Buffered Saline, pH 7.3, with 50% Glycerol and 0.02% Sodium Azide.
Storage:	Shipped at 4°C. Upon delivery aliquot and store at -20°C. Avoid freeze / thaw cycles.
Disclaimer:	This product is for research use only. It is not intended for diagnostic or therapeutic use.

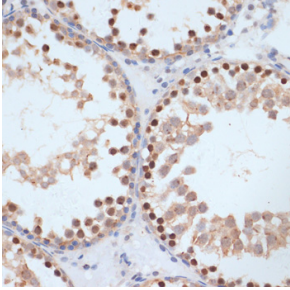
### Images:



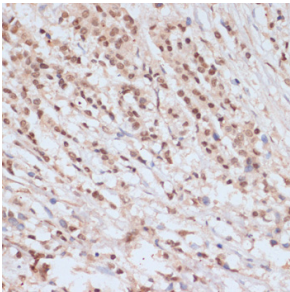
Western blot analysis of extracts of HT-29 cells, using Anti-BRCA1 (phospho Ser1423) Antibody (A10901) at 1:2,000 dilution. HT-29 cells were treated by Anisomycin (5 $\mu$ g/mL) for 30 minutes after serum-starvation overnight. The secondary antibody was Goat Anti-Rabbit IgG H&L Antibody (HRP) at 1:10,000 dilution. Lysates/proteins were present at 25 $\mu$ g per lane. The blocking buffer used was 3% BSA. Detection was with a ECL Basic Kit. Exposure time: 5s.

## Anti-BRCA1 (phospho Ser1423) Antibody (A10901)

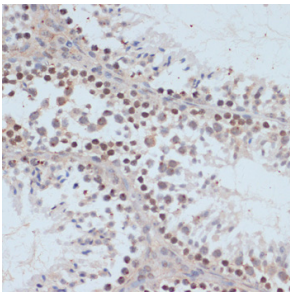
Images continued:



Immunohistochemistry analysis of paraffin-embedded rat testis using Anti-BRCA1 (phospho Ser1423) Antibody (A10901) at a dilution of 1:100 (40x lens). Perform microwave antigen retrieval with 10 mM Tris/EDTA buffer pH 9.0 before commencing with IHC staining protocol.



Immunohistochemistry analysis of paraffin-embedded human breast cancer tissue using Anti-BRCA1 (phospho Ser1423) Antibody (A10901) at a dilution of 1:100 (40x lens). Perform microwave antigen retrieval with 10 mM Tris/EDTA buffer pH 9.0 before commencing with IHC staining protocol.



Immunohistochemistry analysis of paraffin-embedded mouse testis using Anti-BRCA1 (phospho Ser1423) Antibody (A10901) at a dilution of 1:100 (40x lens). Perform microwave antigen retrieval with 10 mM Tris/EDTA buffer pH 9.0 before commencing with IHC staining protocol.