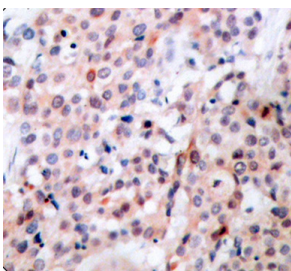


## Anti-Bcl-2 (phospho Thr56) Antibody (A10923)

### Specifications:

Name:	Anti-Bcl-2 (phospho Thr56) Antibody
Description:	Rabbit polyclonal antibody to Bcl-2 (phospho Thr56).
Applications:	WB, IHC
Recommended Dilutions:	WB: 1:500-1:2,000, IHC: 1:50-1:100
Reactivity:	Human, Mouse, Rat
Immunogen:	A synthetic phosphorylated peptide around T56 of human Bcl-2 (NP_000624.2).
Sequence:	GHTPH
Host:	Rabbit
Clonality:	Polyclonal
Isotype:	IgG
Conjugate:	Unconjugated
Purification:	Affinity purification.
Product Form:	Liquid
Formulation:	Supplied in Phosphate Buffered Saline, pH 7.3, with 50% Glycerol and 0.01% Thiomersal.
Storage:	Shipped at 4°C. Upon delivery aliquot and store at -20°C. Avoid freeze / thaw cycles.
Disclaimer:	This product is for research use only. It is not intended for diagnostic or therapeutic use.

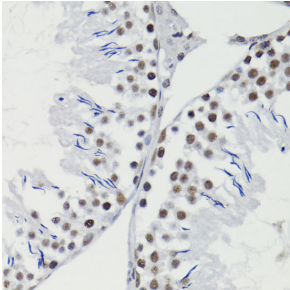
### Images:



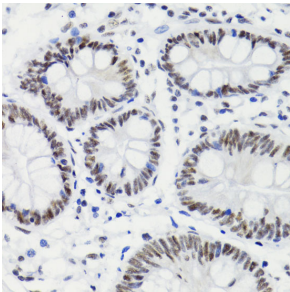
Immunohistochemistry analysis of paraffin-embedded human breast carcinoma tissue, using Anti-Bcl-2 (phospho Thr56) Antibody (A10923). Perform microwave antigen retrieval with 10 mM Tris/EDTA buffer pH 9.0 before commencing with IHC staining protocol.

## Anti-Bcl-2 (phospho Thr56) Antibody (A10923)

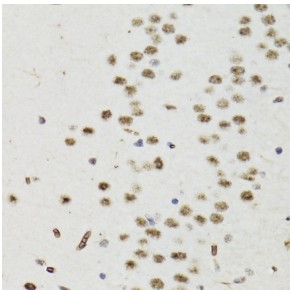
Images continued:



Immunohistochemistry analysis of paraffin-embedded rat testis using Anti-Bcl-2 (phospho Thr56) Antibody (A10923) at a dilution of 1:200 (40x lens). Perform microwave antigen retrieval with 10 mM PBS buffer pH 7.2 before commencing with IHC staining protocol.



Immunohistochemistry analysis of paraffin-embedded human stomach using Anti-Bcl-2 (phospho Thr56) Antibody (A10923) at a dilution of 1:200 (40x lens). Perform microwave antigen retrieval with 10 mM PBS buffer pH 7.2 before commencing with IHC staining protocol.



Immunohistochemistry analysis of paraffin-embedded mouse brain using Anti-Bcl-2 (phospho Thr56) Antibody (A10923) at a dilution of 1:200 (40x lens). Perform microwave antigen retrieval with 10 mM PBS buffer pH 7.2 before commencing with IHC staining protocol.