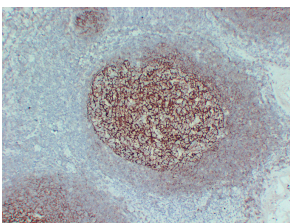


Anti-CD35 Antibody [ABT-CD35] (A100031)

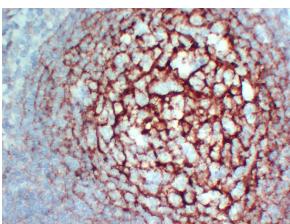
Specifications:

Name:	Anti-CD35 Antibody [ABT-CD35]
Description:	Mouse monoclonal (ABT-CD35) antibody to CD35.
Applications:	IHC
Reactivity:	Human
Immunogen:	Synthetic peptide derived from human CD35.
Host:	Mouse
Clonality:	Monoclonal
Clone ID:	ABT-CD35
Isotype:	IgG
Conjugate:	Unconjugated
Purification:	Immunogen affinity purified.
Product Form:	Liquid
Formulation:	Supplied in Tris Buffered Saline with 0.5% Bovine Serum Albumin and 0.1% Kathon CG/ICP.
Disclaimer:	This product is for research use only. It is not intended for diagnostic or therapeutic use.

Images:



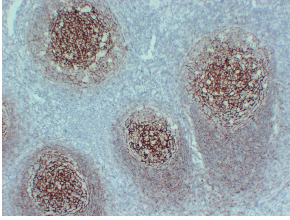
Immunohistochemical analysis of paraffin-embedded human Tonsil using Anti-CD35 Antibody.



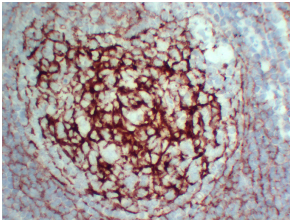
Immunohistochemical analysis of paraffin-embedded human Tonsil-high magnification using Anti-CD35 Antibody.

Anti-CD35 Antibody [ABT-CD35] (A100031)

Images continued:



Immunohistochemical analysis of paraffin-embedded human Tonsil using Anti-CD35 Antibody.



Immunohistochemical analysis of paraffin-embedded human Tonsil-high magnification using Anti-CD35 Antibody.