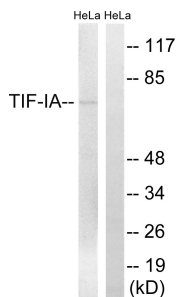


## Anti-TIF-IA Antibody (A100285)

### Specifications:

Name:	Anti-TIF-IA Antibody
Description:	Rabbit polyclonal antibody to TIF-IA.
Applications:	WB, ELISA
Recommended Dilutions:	WB: 1:500-1:1000, ELISA: 1:1000
Reactivity:	Human
Immunogen:	Synthetic peptide derived from human TIF-IA (amino acids 602-651).
Host:	Rabbit
Clonality:	Polyclonal
Isotype:	IgG
Conjugate:	Unconjugated
Purification:	Purified from rabbit serum by antigen affinity chromatography using the immunizing peptide.
Molecular Weight:	74kDa
Product Form:	Liquid
Formulation:	Supplied in Phosphate Buffered Saline (without Mg <sup>2+</sup> and Ca <sup>2+</sup> ), pH 7.4, with 150mM NaCl, 0.02% Sodium Azide, and 50% Glycerol.
Storage:	Shipped at 4°C. Upon delivery aliquot and store at -20°C. Avoid freeze / thaw cycles.
Disclaimer:	This product is for research use only. It is not intended for diagnostic or therapeutic use.

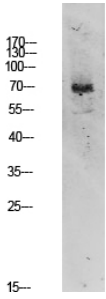
### Images:



Western blot analysis of lysates from HeLa cells, treated with calyculin A 50ng/ml 30' using Anti-TIF-IA Antibody. The right hand lane represents a negative control, where the antibody is blocked by the immunising peptide.

## Anti-TIF-IA Antibody (A100285)

Images continued:



Western blot analysis of 3T3 lysate using Anti-TIF-IA Antibody.