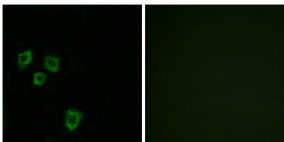


## Anti-MUC16 Antibody (A100966)

### Specifications:

Name:	Anti-MUC16 Antibody
Description:	Rabbit polyclonal antibody to MUC16.
Applications:	IF, ELISA
Recommended Dilutions:	IF: 1:100-1:500, ELISA: 1:20000
Reactivity:	Human
Immunogen:	Synthetic peptide derived from human MUC16 (amino acids 13311-13360).
Host:	Rabbit
Clonality:	Polyclonal
Isotype:	IgG
Conjugate:	Unconjugated
Purification:	Purified from rabbit serum by antigen affinity chromatography using the immunizing peptide.
Molecular Weight:	2353kDa
Product Form:	Liquid
Formulation:	Supplied in Phosphate Buffered Saline (without Mg <sup>2+</sup> and Ca <sup>2+</sup> ), pH 7.4, with 150mM NaCl, 0.02% Sodium Azide, and 50% Glycerol.
Storage:	Shipped at 4°C. Upon delivery aliquot and store at -20°C. Avoid freeze / thaw cycles.
Disclaimer:	This product is for research use only. It is not intended for diagnostic or therapeutic use.

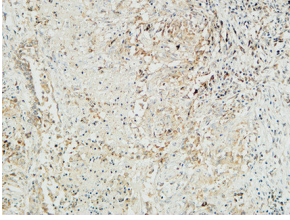
### Images:



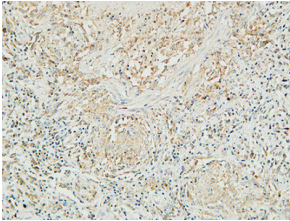
Immunofluorescence analysis of HepG2 cells using Anti-MUC16 Antibody. The right hand panel represents a negative control, where the antibody was pre-incubated with the immunising peptide.

## Anti-MUC16 Antibody (A100966)

Images continued:



Immunohistochemical analysis of paraffin-embedded human lung using Anti-MUC16 Antibody.



Immunohistochemical analysis of paraffin-embedded human lung using Anti-MUC16 Antibody.