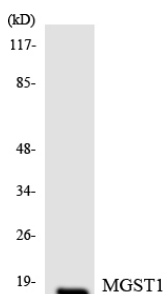


Anti-MGST1 Antibody (A100983)

Specifications:

| | |
|------------------------|--|
| Name: | Anti-MGST1 Antibody |
| Description: | Rabbit polyclonal antibody to MGST1. |
| Applications: | WB, ELISA |
| Recommended Dilutions: | WB: 1:500-1:1000, ELISA: 1:10000 |
| Reactivity: | Human |
| Immunogen: | Synthetic peptide derived from human MGST1 (amino acids 25-74). |
| Host: | Rabbit |
| Clonality: | Polyclonal |
| Isotype: | IgG |
| Conjugate: | Unconjugated |
| Purification: | Purified from rabbit serum by antigen affinity chromatography using the immunizing peptide. |
| Molecular Weight: | 17kDa |
| Product Form: | Liquid |
| Formulation: | Supplied in Phosphate Buffered Saline (without Mg ²⁺ and Ca ²⁺), pH 7.4, with 150mM NaCl, 0.02% Sodium Azide, and 50% Glycerol. |
| Storage: | Shipped at 4°C. Upon delivery aliquot and store at -20°C. Avoid freeze / thaw cycles. |
| Disclaimer: | This product is for research use only. It is not intended for diagnostic or therapeutic use. |

Images:



Western blot analysis of the lysates from RAW264.7 cells using Anti-MGST1 Antibody.