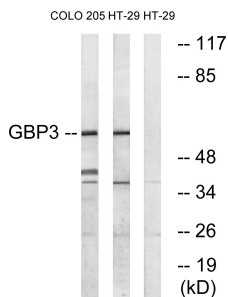


## Anti-GBP3 Antibody (A101437)

### Specifications:

|                        |  |
|------------------------|--|
| Name:                  | Anti-GBP3 Antibody   |
| Description:           | Rabbit polyclonal antibody to GBP3.  |
| Applications:          | WB, ELISA  |
| Recommended Dilutions: | WB: 1:500-1:1000, ELISA: 1:10000   |
| Reactivity:            | Human  |
| Immunogen:             | Synthetic peptide derived from human GBP3 (amino acids 481-530).   |
| Host:                  | Rabbit   |
| Clonality:             | Polyclonal   |
| Isotype:               | IgG  |
| Conjugate:             | Unconjugated   |
| Purification:          | Purified from rabbit serum by antigen affinity chromatography using the immunizing peptide.  |
| Molecular Weight:      | 64kDa  |
| Product Form:          | Liquid   |
| Formulation:           | Supplied in Phosphate Buffered Saline (without Mg <sup>2+</sup> and Ca <sup>2+</sup> ), pH 7.4, with 150mM NaCl, 0.02% Sodium Azide, and 50% Glycerol. |
| Storage:               | Shipped at 4°C. Upon delivery aliquot and store at -20°C. Avoid freeze / thaw cycles.  |
| Disclaimer:            | This product is for research use only. It is not intended for diagnostic or therapeutic use.   |

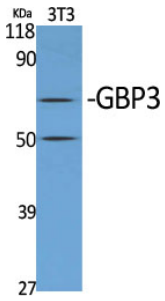
### Images:



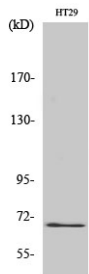
Western blot analysis of lysates from HT-29 and COLO cells using Anti-GBP3 Antibody. The right hand lane represents a negative control, where the antibody is blocked by the immunising peptide.

## Anti-GBP3 Antibody (A101437)

Images continued:



Western blot analysis of various cells using Anti-GBP3 Antibody.



Western blot analysis of COLO205 cells using Anti-GBP3 Antibody.