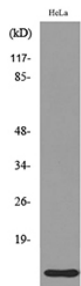


## Anti-IL8 Antibody (A101621)

### Specifications:

Name:	Anti-IL8 Antibody
Description:	Rabbit polyclonal antibody to IL8.
Applications:	WB, ELISA
Recommended Dilutions:	WB: 1:500-1:1000, ELISA: 1:10000
Reactivity:	Human
Immunogen:	Synthetic peptide derived from the C-terminal region of human IL8 (amino acids 50-99).
Host:	Rabbit
Clonality:	Polyclonal
Isotype:	IgG
Conjugate:	Unconjugated
Purification:	The antibody was affinity-purified from rabbit antiserum by affinity-chromatography using peptide.
Molecular Weight:	11kDa
Product Form:	Liquid
Formulation:	Supplied in Phosphate Buffered Saline (without Mg <sup>2+</sup> and Ca <sup>2+</sup> ), pH 7.4, with 150mM NaCl, 0.02% Sodium Azide, and 50% Glycerol.
Storage:	Shipped at 4°C. Upon delivery aliquot and store at -20°C. Avoid freeze / thaw cycles.
Disclaimer:	This product is for research use only. It is not intended for diagnostic or therapeutic use.

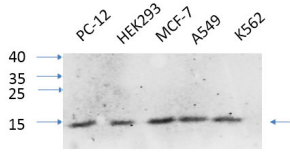
### Images:



Western blot analysis of lysate from HeLa cells using Anti-IL8 Antibody.

## Anti-IL8 Antibody (A101621)

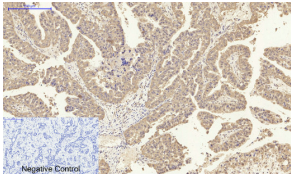
Images continued:



Western blot analysis of various cells using Anti-IL8 Antibody at 1:1,000 (4°C overnight). Goat Anti-Rabbit IgG (IRDye 800) was used as a secondary at 1:5,000 (25°C, 1 hour).



Western blot analysis of HeLa cells using Anti-IL8 Antibody.



Immunohistochemical analysis of paraffin-embedded human liver cancer tissue using Anti-IL8 Antibody at 1:200 (4°C overnight). Negative control was secondary antibody only.