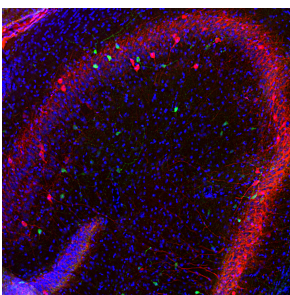


Anti-Calretinin Antibody (A104312)

Specifications:

| | |
|------------------------|--|
| Name: | Anti-Calretinin Antibody |
| Description: | Chicken polyclonal antibody to Calretinin. |
| Applications: | WB, ICC/IF, IHC |
| Recommended Dilutions: | WB: 1:1,000-1:5,000, ICC/IF: 1:1,000-1:5,000, IHC: 1:1,000-1:5,000 |
| Reactivity: | Human, Rat, Mouse, Bovine, Porcine, Horse |
| Immunogen: | Recombinant full-length human Calretinin, expressed in and purified from E. coli. |
| Host: | Chicken |
| Clonality: | Polyclonal |
| Isotype: | IgY |
| Conjugate: | Unconjugated |
| Molecular Weight: | 29 kDa |
| Purity: | IgY preparation. |
| Product Form: | Liquid |
| Formulation: | Supplied as an aliquot of IgY preparation with 5mM Sodium Azide. |
| Storage: | Shipped at 4°C. Upon delivery aliquot and store at -20°C. Avoid freeze / thaw cycles. |
| Disclaimer: | This product is for research use only. It is not intended for diagnostic or therapeutic use. |

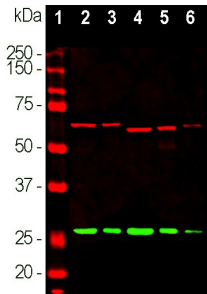
Images:



Immunofluorescent analysis of rat hippocampus section stained with Anti-Calretinin Antibody (1:1,000 | green) and co-stained with Anti-Parvalbumin Antibody (1:1,000 | red). Following transcardial perfusion of rat with 4% paraformaldehyde, brain was post fixed for 24 hours, cut to 45 μ M, and free-floating sections were stained with the above antibodies. The Anti-Calretinin Antibody and Anti-Parvalbumin Antibody label different classes of interneurons.

Anti-Calretinin Antibody (A104312)

Images continued:



Western blot analysis of different tissue lysates using Anti-Calretinin Antibody (1:1,000 | green): [1] protein standard (red), [2] rat brain, [3] rat spinal cord, [4] mouse brain, [5] mouse spinal cord, and [6] cow spinal cord. A band at 29kDa corresponds to calretinin protein. The same blot was simultaneously probed with Anti-alpha Internexin Antibody (1:10,000 | red) that reveals the alpha internexin protein with apparent molecular weight of 66kDa