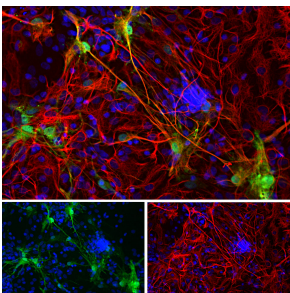


Anti-Galectin 3 Antibody (A104321)

Specifications:

Name:	Anti-Galectin 3 Antibody
Description:	Rabbit polyclonal antibody to Galectin 3.
Applications:	WB, ICC/IF
Recommended Dilutions:	WB: 1:5,000, ICC/IF: 1:2,000
Reactivity:	Human, Rat, Mouse, Porcine
Immunogen:	Recombinant full-length Galectin 3, expressed in and purified from E. coli.
Host:	Rabbit
Clonality:	Polyclonal
Isotype:	IgG
Conjugate:	Unconjugated
Molecular Weight:	30 kDa
Purity:	Whole antiserum.
Product Form:	Liquid
Formulation:	Supplied as an aliquot of serum with 5mM Sodium Azide.
Storage:	Shipped at 4°C. Upon delivery aliquot and store at -20°C. Avoid freeze / thaw cycles.
Disclaimer:	This product is for research use only. It is not intended for diagnostic or therapeutic use.

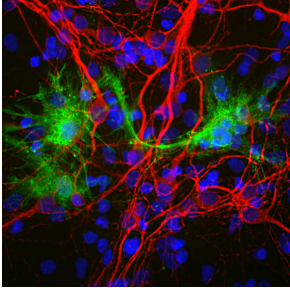
Images:



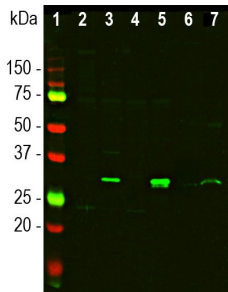
Immunofluorescent analysis of cortical neuron-glia cell culture from E20 rat stained with Anti-Galectin 3 Antibody (1:2,000 | green), and co-stained with Anti-GFAP Antibody (1:2,000 | red). The blue is Hoechst staining of nuclear DNA. Certain glial cells express galectin-3 protein and so appear green, while the majority of glial cells and astrocytes produce GFAP protein and so appear red, and a few cells that express both proteins appear orange-yellow.

Anti-Galectin 3 Antibody (A104321)

Images continued:



Immunofluorescent analysis of cortical neuron-glia cell culture from E20 rat stained with Anti-Galectin 3 Antibody (1:2,000 | green), and co-stained with Anti-MAP2 Antibody [4H5] (A85297) (1:2,000 | red). The blue is Hoechst staining of nuclear DNA. Anti-Galectin 3 Antibody produces strong staining of certain glial cells, while Anti-MAP2 Antibody [4H5] labels dendrites and perikarya of mature neurons.



Western blot analysis of different tissue and cell lysates using Anti-Galectin 3 Antibody (1:5,000 | green): [1] protein standard and mouse tissue lysates: [2] heart, [3] liver, [4] kidney, [5] lung, [6] rat cortical neuron-glia primary cell culture lysate and [7] pig spinal cord lysate. The band at about 30kDa corresponds to the galectin 3 protein