

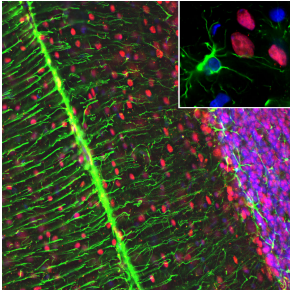
## Anti-MeCP2 Antibody [5H12] (A104323)

### Specifications:

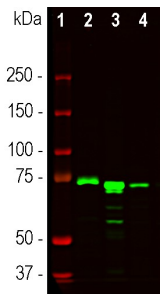
Name:	Anti-MeCP2 Antibody [5H12]
Description:	Mouse monoclonal (5A12) antibody to MeCP2.
Applications:	WB, ICC/IF, IHC
Recommended Dilutions:	WB: 1:5,000-1:10,000, ICC/IF: 1:1,000-1:5,000, IHC: 1:1,000-1:5,000
Reactivity:	Human, Rat, Mouse, Canine, Bovine, Horse, Monkey
Immunogen:	Recombinant full-length human MeCP2, expressed in and purified from E. coli.
Host:	Mouse
Clonality:	Monoclonal
Clone ID:	5H12
Isotype:	IgG2b
Conjugate:	Unconjugated
Purification:	Immunogen affinity purification.
Concentration:	1 mg/ml
Molecular Weight:	75 kDa (by SDS-PAGE)
Product Form:	Liquid
Formulation:	Supplied in Phosphate Buffered Saline with 50% Glycerol and 5mM Sodium Azide.
Storage:	Shipped at 4°C. Upon delivery aliquot and store at -20°C. Avoid freeze / thaw cycles.
Disclaimer:	This product is for research use only. It is not intended for diagnostic or therapeutic use.

## Anti-MeCP2 Antibody [5H12] (A104323)

### Images:



Immunofluorescent analysis of a rat cerebellum section stained with Anti-MeCP2 Antibody (1:1,000 | red) and co-stained with Anti-GFAP Antibody (1:5,000 | green). The blue is Hoechst staining of nuclear DNA. Following transcardial perfusion of rat with 4% paraformaldehyde, brain was post fixed for 1 hour, cut to 45 $\mu$ M, and free-floating sections were stained with the above antibodies. The Anti-MeCP2 Antibody specifically labels nuclei of neurons, while the Anti-GFAP Antibody stains the network of astroglial cells and projections of Bergmann glia.



Western blot analysis of different tissue lysates using Anti-MeCP2 Antibody (1:2,000 | green). [1] protein standard, [2] nuclear extract of rat brain, [3] nuclear extract of mouse brain and [4] cow cerebellum. The strong band at about 74kDa corresponds to the MeCP2 protein.