

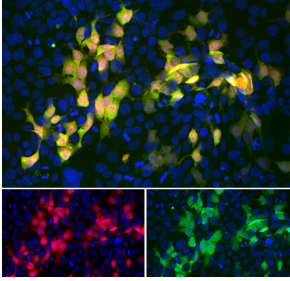
## Anti-mCherry Antibody [5A6] (A104343)

### Specifications:

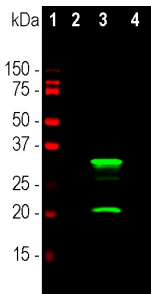
Name:	Anti-mCherry Antibody [5A6]
Description:	Mouse monoclonal (5A6) antibody to mCherry.
Specificity:	The epitope of this antibody has been mapped to the peptide IKQRLKLDGGGHYDAEVKTT, with the central KLKLDGGGHYDA sequence a key component of antibody binding.
Applications:	WB, ICC/IF, IHC
Recommended Dilutions:	WB: 1:2,000, ICC/IF: 1:500, IHC: 1:500
Immunogen:	Recombinant full-length mCherry, expressed in and purified from E. coli.
Sequence:	MVSKGEEDNMAIIKEFMRFKVVHMEGSVNGHEFEIEGEGEGRPYEGTQTAKLKVTKGGP LPFAWDILSPQFMYGSKAYVKHPADIPDYKLSFPEGFKWERVMNFEDGGVVTVTQDS SLQDGEFIYKVKLRGTNFPDGPVPMQKKTMGWEASSERMYPEDGALKGEIKQRLKLD GGHYDAEVKTTYKAKKPVQLPGAYNvNIKLDITSHNEDYTIVEQYERAEGRHSTGGMD ELYK
Host:	Mouse
Clonality:	Monoclonal
Clone ID:	5A6
Isotype:	IgG1
Conjugate:	Unconjugated
Purification:	Immunogen affinity purification.
Concentration:	1 mg/ml
Molecular Weight:	28 kDa
Product Form:	Liquid
Formulation:	Supplied in Phosphate Buffered Saline with 50% Glycerol and 5mM Sodium Azide.
Storage:	Shipped at 4°C. Upon delivery aliquot and store at -20°C. Avoid freeze / thaw cycles.
General Notes:	This antibody can be used to verify the size of fusion constructs by western blotting, and to amplify the endogenous fluorescence of mCherry in transfected cells.
Disclaimer:	This product is for research use only. It is not intended for diagnostic or therapeutic use.

## Anti-mCherry Antibody [5A6] (A104343)

### Images:



Immunofluorescent analysis of HEK293 cells stably transduced with a lentiviral vector expressing an mCherry-HA construct (red) and stained with Anti-mCherry Antibody (1:500 | green). The blue is Hoechst staining of nuclear DNA. The Anti-mCherry Antibody reveals the mCherry protein expressed only in transduced cells which appear golden in color. Untransduced cells expressing no mCherry are not recognized by the Anti-mCherry Antibody and so only their nuclei are visible.



Western blot analysis of various HEK293 cell lysates using Anti-mCherry Antibody (1:5,000 | green). [1] protein standard, [2] untransfected HEK293 lysate, [3] lysate of HEK293 cells transfected with mCherry-HA construct, and [4] lysate of HEK293 cells transfected with an acGFP construct. As expected from our epitope mapping data, Anti-mCherry Antibody does not recognize eGFP. The major band at about 28kDa corresponds to the full length mCherry protein and the lower band at about 21kDa is an mCherry breakdown product.