

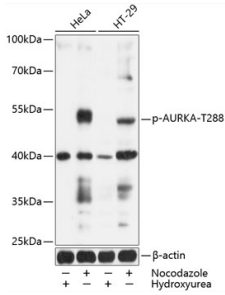
Anti-Aurora A (phospho Thr288) Antibody (A11002)

Specifications:

Name:	Anti-Aurora A (phospho Thr288) Antibody
Description:	Rabbit polyclonal antibody to Aurora A (phospho Thr288).
Applications:	WB
Recommended Dilutions:	WB: 1:500-1:2,000
Reactivity:	Human
Immunogen:	A synthetic phosphorylated peptide around T288 of human AURKA (NP_003591.2).
Sequence:	RTTLC
Host:	Rabbit
Clonality:	Polyclonal
Isotype:	IgG
Conjugate:	Unconjugated
Purification:	Affinity purification.
Molecular Weight:	48 kDa
Product Form:	Liquid
Formulation:	Supplied in Phosphate Buffered Saline, pH 7.3, with 50% Glycerol and 0.02% Sodium Azide.
Storage:	Shipped at 4°C. Upon delivery aliquot and store at -20°C. Avoid freeze / thaw cycles.
Disclaimer:	This product is for research use only. It is not intended for diagnostic or therapeutic use.

Anti-Aurora A (phospho Thr288) Antibody (A11002)

Images:



Western blot analysis of extracts of HeLa and HT-29 cells, using Anti-Aurora A (phospho Thr288) Antibody (A11002) at 1:1,000 dilution. HeLa cells were treated by Hydroxyurea (4mM) for 20 hours. HeLa cells were treated by Nocodazole (50ng/ml) for 20 hours. HT-29 cells were treated by Hydroxyurea (4 mM) for 20 hours or treated by Nocodazole (100ng/ml) for 16 hours. The secondary antibody was Goat Anti-Rabbit IgG H&L Antibody (HRP) at 1:10,000 dilution. Lysates/proteins were present at 25µg per lane. The blocking buffer used was 3% BSA. Detection was with a ECL Basic Kit. Exposure time: 90s.